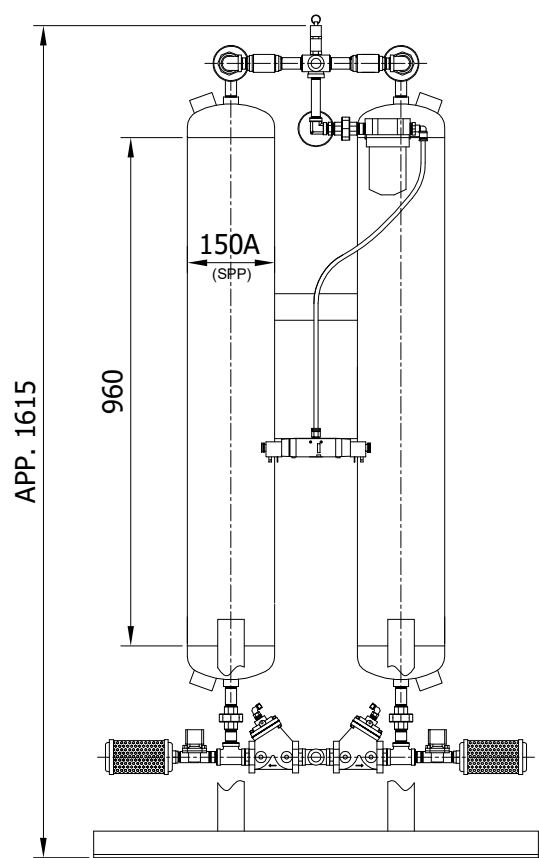
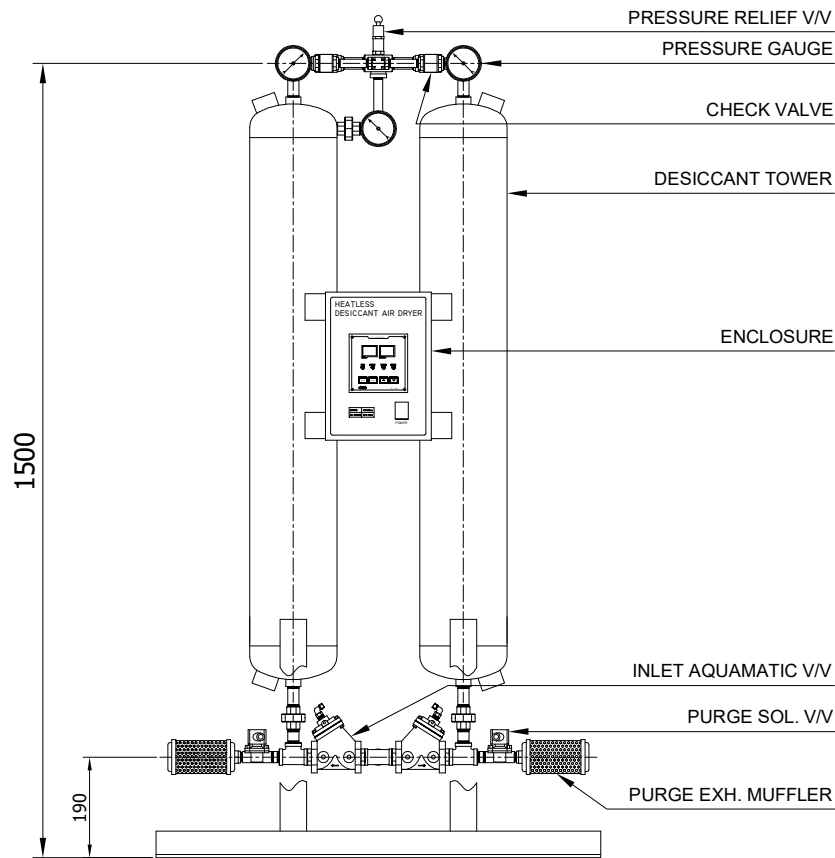
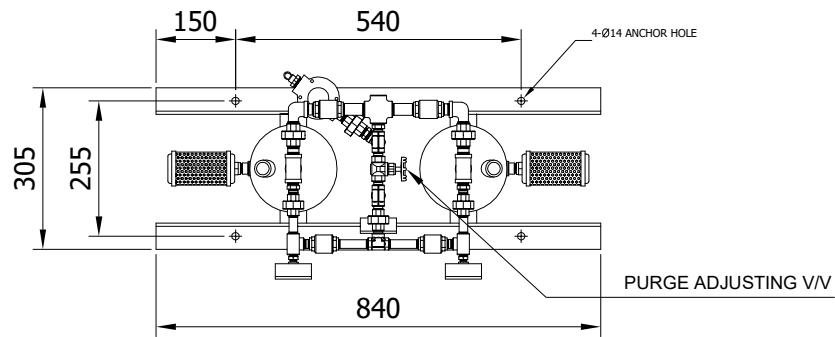
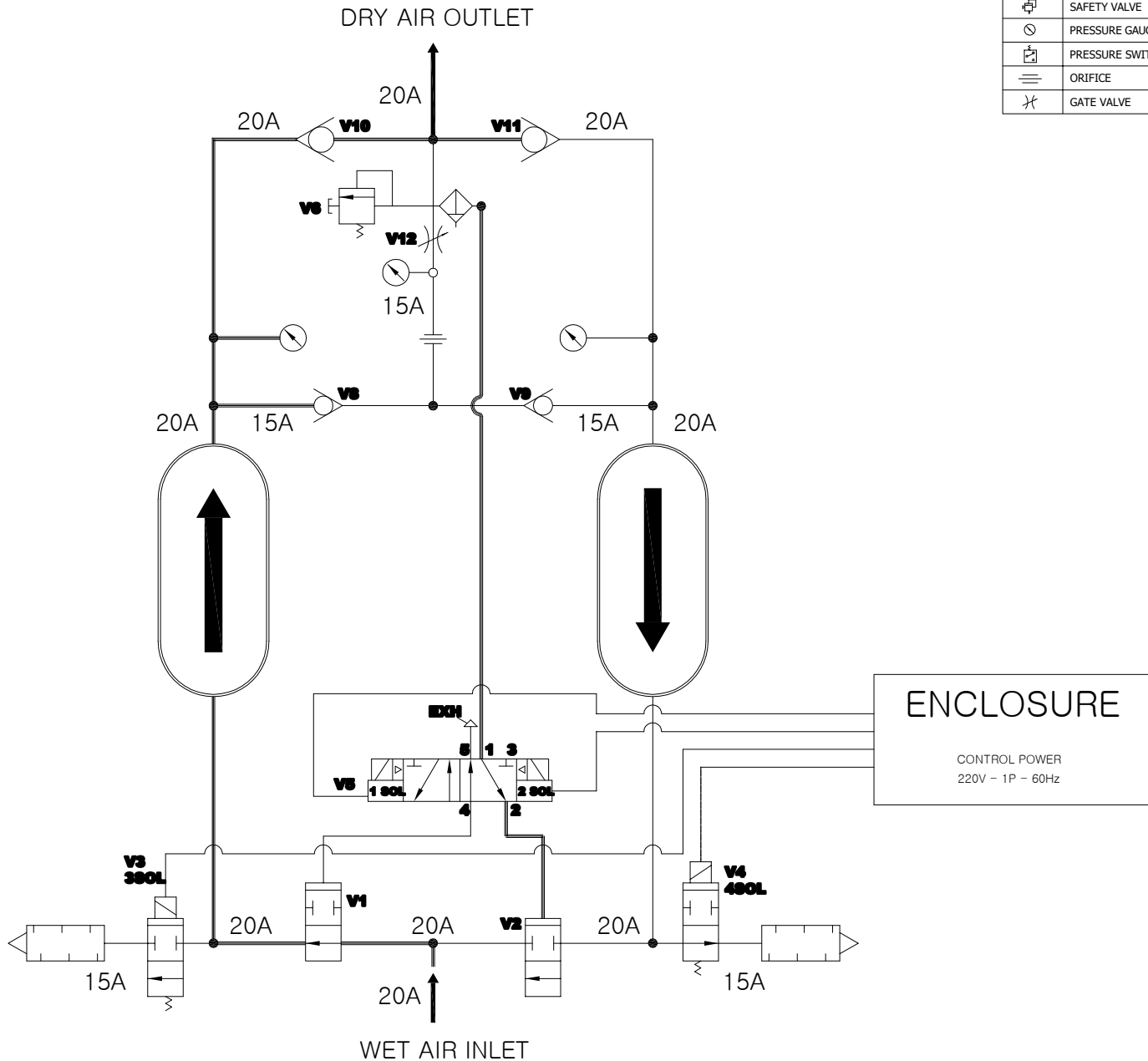
		Desiccant Air Dryer Heatless Type		Rev.	Date	Prepared By	Checked By	Approved By
				A	2019.01.15	LEE.S.M.	JO.S.J.	KIM.H.W.
Project No		-		Model Name		PHL-50		
MECHANICAL DESIGN DATA								
2	Supply Voltage	220V		Inlet Flow Rate	85	Nm ³ /h		
3	Phase	1PH		Inlet Pressure	7.0	barg		
4	Frequency	60Hz		Inlet Temp.	38	°C		
5	Control use	220V		Outlet Flow Rate	73	Nm ³ /h		
6	Fulid	Compressed Air		Outlet Pressure	6.8	barg		
7	Location	Indoor		Outlet Temp.	40	°C		
8	Design Code	Maker STD.		Pressure Drop	0.2	bar		
9	Area Class	Non-Hazardous		Outlet Dew Point	-40	°C at ATM		
10	Purge Fulid	Dried Air		Purge Rate	12	Nm ³ /h		
CONSTRUCTION								
12	Dryer Type	Heatless		Design Pressure	9.7	barg		
13	Vessels Design Code	KS B 6750-3		Design Temperature	250	°C		
14	Vessels Corrosion Allowance	1	mm	Ambient Temperature	38	°C		
15	Desiccant	Activated Alumina		Drying Time	5	min		
16	Desiccant Quantity	25	kg/2Tower	Reactivation Time	4	min		
17	Noise	85	dBA	- Heating Time	N/A	min		
18	Inlet Connection	20A	PT Female Screw	- Cooling Time	N/A	min		
19	Outlet Connection	20A	PT Female Screw	- Repressing Time	1	min		
20	Material			Heater Type	Location	N/A		
21	- Shell / Head	SPP / SS275			Method	N/A		
22	- Flange / Pipe	SS275 / SPP		Heater Power	Main	N/A	kW	
23	- Heater(Shell/Head)	N/A			Aux.	N/A	kW	
24	Dimension (W x L x H)	840 X 305 X 1615	mm	Control Panel Power	50	W		
25	Weight	136	kg	Blower Power	N/A	kW		
26	Color (Munsell)	3.0 BG 7.1/0.2		Power Consumption(Avg.)	50	W		
27	Insulation	NO		Control Unit	Printed Circuit Board (P.C.B)			
28				Enclosure Control Panel	IP23			
INSTRUMENTS-ACESSORIES								
30	Pressure Gauge	YES						
31	Pressure Switch	NO						
32	Orifice	YES						
33	Pressure Regulator For Control Air	NO						
34	Instrument Air Filter	YES						
35								
OPTION ITEM								
37	Touch Screen	NO						
38	Valve Limit Switch	NO						
39	Dew Point Meter	NO						
40	Local Control Panel Double Door	NO						
41	Anchor Bolt / Nut	NO						
NOTES								
43								
44								
45								
46								



POWER SOURCE			
AC 220V, 1Ph, 50/60Hz			
18	OUTLET	PT 20A	1
17	INLET	PT 20A	1
16	CONTROL BOARD	PCB	1
15	ENCLOSURE	-	1
14	DESICCANT TOWER	-	2
13	PURGE SOL. V/V	PT 15A	2
12	PURGE EXH. MUFFLER	PT 15A	2
11	INLET AQUAMATIC V/V	PT 20A	2
10	TOWER SELECTING SOL. V/V	4W 2P	1
9	PRESSURE RELIEF V/V	PT 6A	1
8	POWER ON/OFF SWITCH	250V 6A	1
7	INSTRUMENT AIR FILTER	PT 10A	1
6	PURGE PRESSURE GAUGE	PT 8A	1
5	PURGE ORIFICE UNION	PT 15A	1
4	PURGE ADJUSTING V/V	PT 15A	1
3	TOWER PRESSURE GAUGE	PF 8A	2
2	PURGE CHECK V/V	PT 15A	2
1	OUTLET CHECK V/V	PT 20A	2
NO.	PART NAME	DESC.	QTY

△									
△									
△									
△									
△									
△	2018.12.10	ISSUED FOR PROPOSAL	-	-	-	-	-	-	-
REV. NO.	DATE	DESCRIPTION	DWG	CHK	APPD	APPD	APPD	APPD	APPD
PROJECT									
MANUFACTURER									
TITLE									
PHL-50 OUTLINE									
ITEM NO.	PHL-50	DWG NO.							
SCALE	NONE	GSA-PHL-0050-01							
									REV.



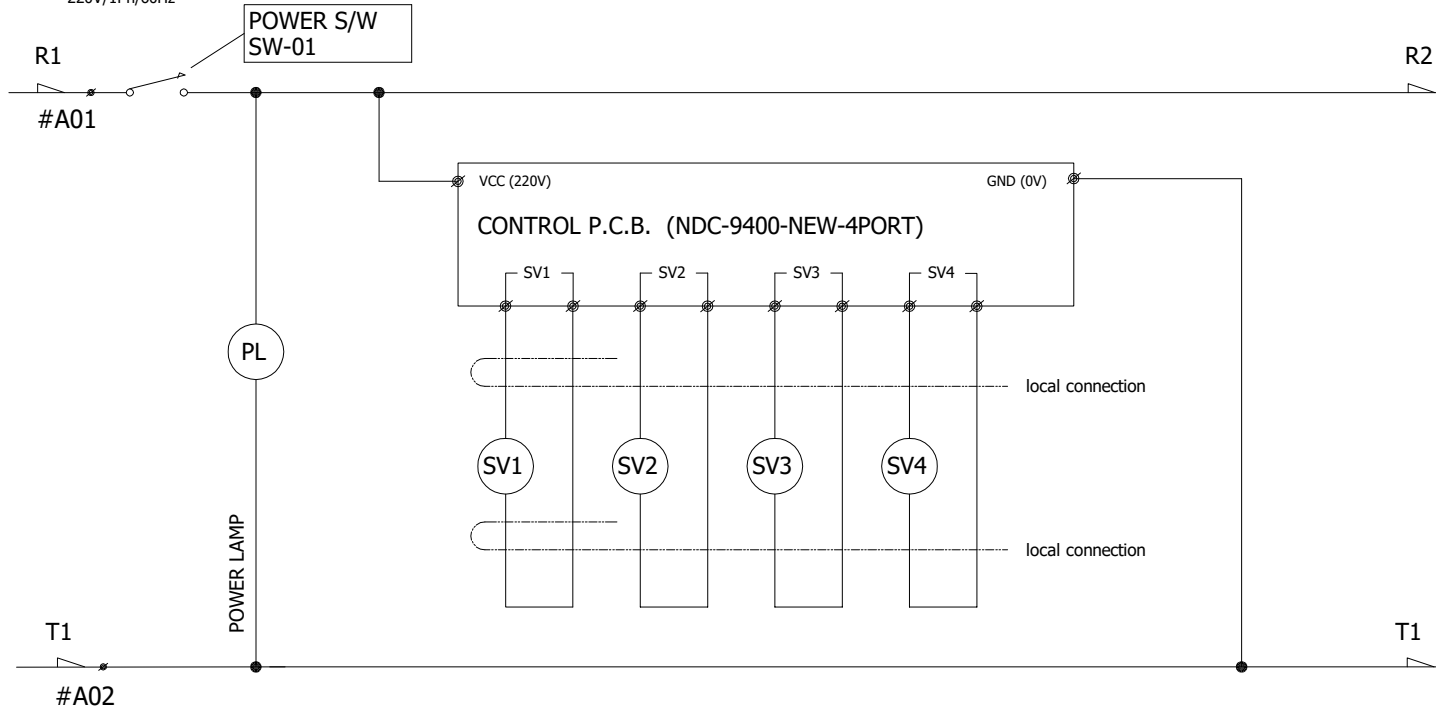
SYMBOL	DESCRIPTION	NO.	NOTE
	CHECK VALVE	1	LINE SYMBOLS FOR FLOW DIRECTION. — LEFT TOWER DRYING — RIGHT TOWER REGENERATING — PILOT AIR LINE — ELECTRIC CONNECTION
	MUFFLER	2	
	SAFETY VALVE	3	
	PRESSURE GAUGE		
	PRESSURE SWITCH		
	ORIFICE		
	GATE VALVE		

* 17	D.P. SENSOR ISOLATION VALVE(V14)
* 16	DEW POINT SENSOR ASSEMBLY
* 15	D.P. SENSOR PREFILTER
* 14	D.P. SENSOR ISOLATION VALVE(V13)
13	DESICCANT TOWERS
12	AIR FILTER FOR VALVE CONTROL
11	PURGE FLOW ADJUSTMENT VALVE(V12)
10	PURGE FLOW ORIFICE
9	PURGE PRESSURE GAUGE
8	TOWER PRESSURE GAUGES
7	OUTLET CHECK VALVE(V10/V11)
6	PURGE CHECK VALVE(V8/V9)
5	TOWER SAFETY VALVE(V6/V7)
4	TOWER SELECTING VALVE(V5)
3	PURGE EXHAUST MUFFLER
2	PURGE EXHAUST VALVE(V3/V4)
1	INLET VALVE(V1/V2)
NO.	DESCRIPTION


ENCLOSURE
 CONTROL POWER
 220V - 1P - 60Hz

△										
△										
△										
△										
△										
△	2018.12.10	ISSUED FOR PROPOSAL	-	-	-	-	-	-	-	
REV. NO.	DATE	DESCRIPTION	DWG	CHK	APPD	APPD	APPD	APPD	APPD	
PROJECT										
MANUFACTURER										
TITLE										
PHL-50 SYSTEM										
ITEM NO.	PHL-50	DWG NO.								REV.
SCALE	NONE	GSA-PHL-0050-02								

MAIN CIRCUIT
CONTROL SOURCE CONNECTIONS
220V/1Ph/60Hz



SV1	B-TOWER INLET
SV2	B-TOWER PURGE
SV3	A-TOWER INLET
SV4	A-TOWER PURGE

△										
△										
△										
△										
△	2018.12.10	ISSUED FOR PROPOSAL	-	-	-	-	-	-	-	
REV. NO.	DATE	DESCRIPTION	DWG	CHK	APPD	APPD	APPD	APPD	APPD	
PROJECT										
MANUFACTURER										
 Global Standard Air & Gas										
TITLE										
PHL-50 WIRING										
ITEM NO.	PHL-50	DWG NO.								REV.
SCALE	NONE	GSA-PHL-0050-03							△	