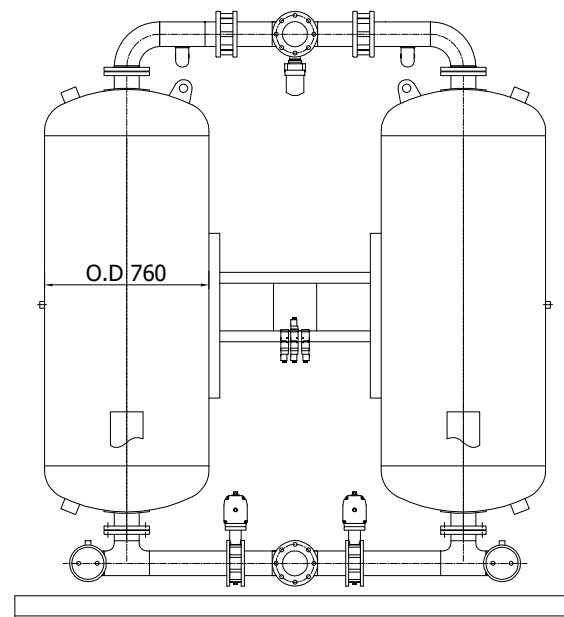
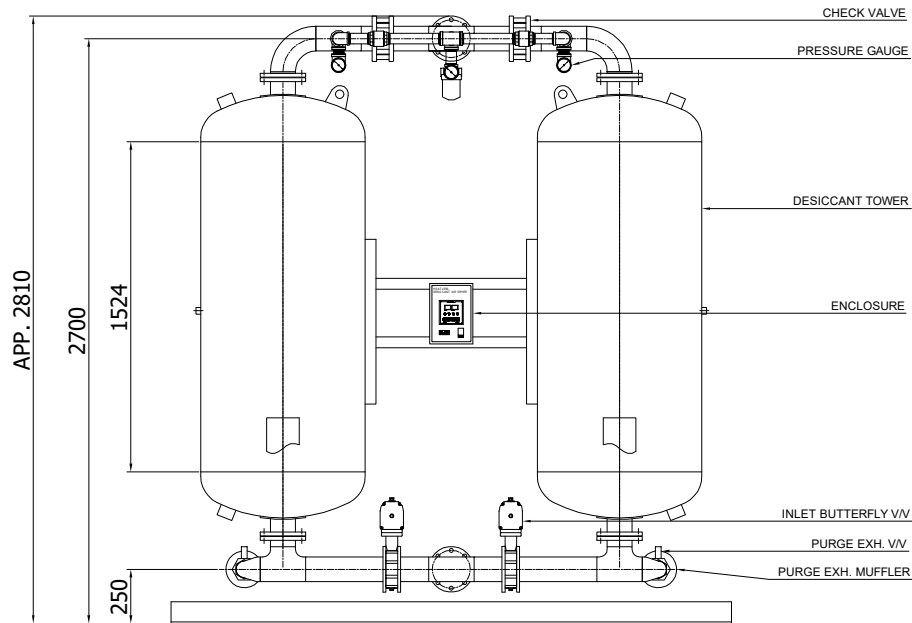
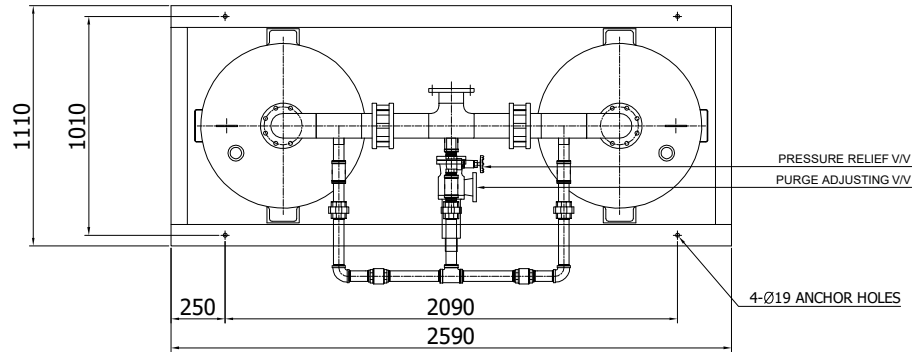
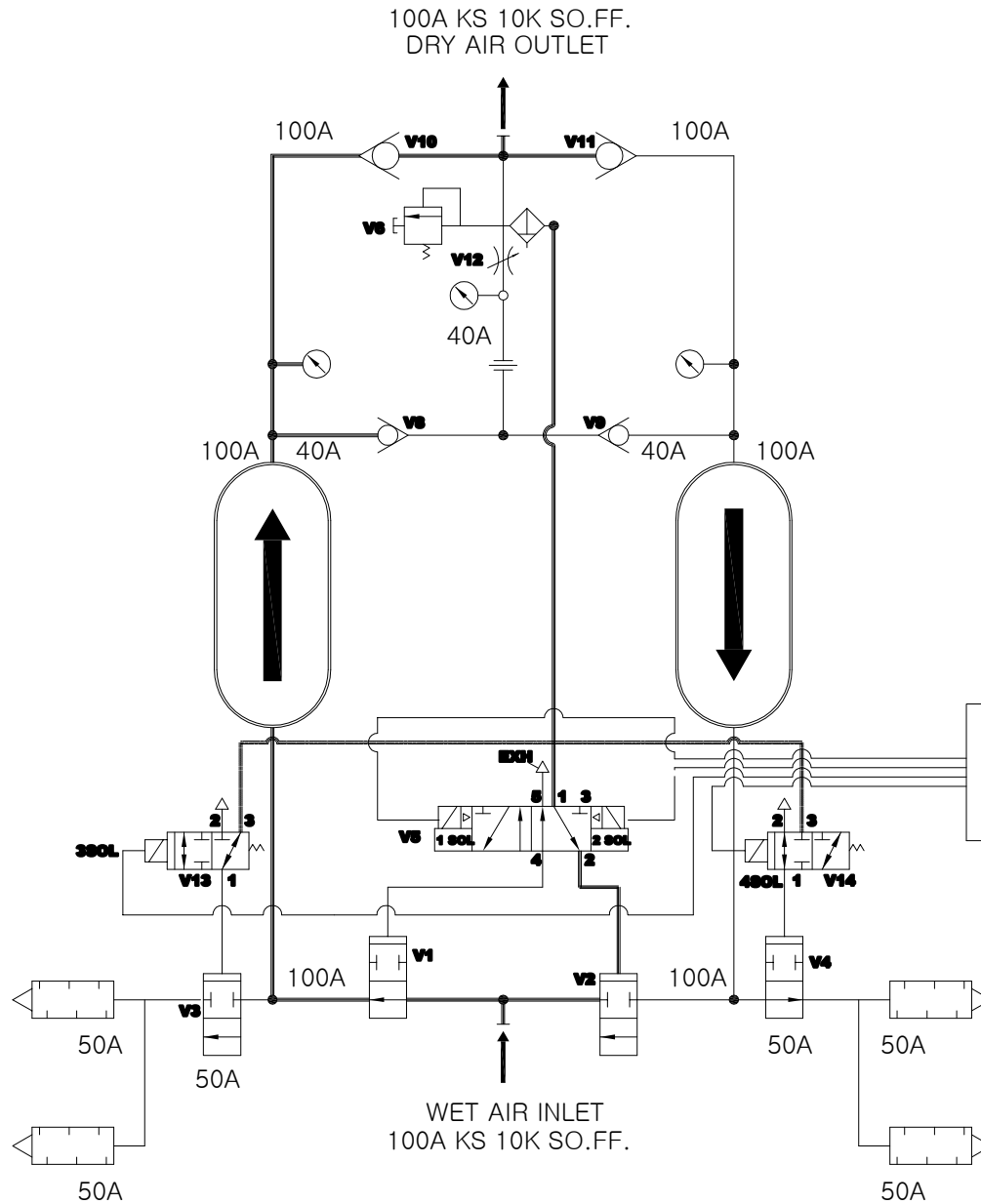
	Desiccant Air Dryer		Rev.	Date	Prepared By	Checked By	Approved By
			1	2019.01.15	LEE.S.M.	JO.S.J.	KIM.H.W.
	Heatless Type		2				
			3				
4							
Project No			-		Model Name		PHL-2000
MECHANICAL DESIGN DATA							
2	Supply Voltage	220V	Inlet Flow Rate	3,400	Nm ³ /h		
3	Phase	1PH	Inlet Pressure	7.0	barg		
4	Frequency	60Hz	Inlet Temp.	38	°C		
5	Control use	220V	Outlet Flow Rate	2,924	Nm ³ /h		
6	Fulid	Compressed Air	Outlet Pressure	6.8	barg		
7	Location	Indoor	Outlet Temp.	40	°C		
8	Design Code	Maker STD.	Pressure Drop	0.2	bar		
9	Area Class	Non-Hazardous	Outlet Dew Point	-40	°C at ATM		
10	Purge Fulid	Dried Air	Purge Rate	476	Nm ³ /h		
CONSTRUCTION							
12	Dryer Type	Heatless	Design Pressure	9.7	barg		
13	Vessels Design Code	KS B 6750-3	Design Temperature	250	°C		
14	Vessels Corrosion Allowance	1 mm	Ambient Temperature	38	°C		
15	Desiccant	Activated Alumina	Drying Time	5	min		
16	Desiccant Quantity	1,000 kg/2Tower	Reactivation Time	4	min		
17	Noise	85 dBA	- Heating Time	N/A	min		
18	Inlet Connection	100A KS 10K SO.FF.	- Cooling Time	N/A	min		
19	Outlet Connection	100A KS 10K SO.FF.	- Repressing Time	1	min		
20	Material		Heater Type	Location	N/A		
21	- Shell / Head	SS275 / SS275		Method	N/A		
22	- Flange / Pipe	SS275 / SPP	Heater Power	Main	N/A	kW	
23	- Heater(Shell/Head)	N/A		Aux.	N/A	kW	
24	Dimension (W x L x H)	2590 X 1110 X 2810 mm	Control Panel Power	50	W		
25	Weight	2,340 kg	Blower Power	N/A	kW		
26	Color (Munsell)	3.0 BG 7.1/0.2	Power Consumption(Avg.)	50	W		
27	Insulation	NO	Control Unit	Printed Circuit Board (P.C.B)			
28			Enclosure Control Panel	IP23			
INSTRUMENTS-ACESSORIES							
30	Pressure Gauge	YES					
31	Pressure Switch	NO					
32	Orifice	YES					
33	Pressure Regulator For Control Air	NO					
34	Instrument Air Filter	YES					
35							
OPTION ITEM							
37	Touch Screen	NO					
38	Valve Limit Switch	NO					
39	Dew Point Meter	NO					
40	Local Control Panel Double Door	NO					
41	Anchor Bolt / Nut	NO					
NOTES							
43							
44							
45							
46							



POWER SOURCE AC 220V, 1Ph, 50/60Hz			
NO.	PART NAME	DESC.	QTY
19	OUTLET	FLG. 100A	1
18	INLET	FLG. 100A	1
17	CONTROL BOARD	PCB	1
16	ENCLOSURE	-	1
15	DESICCANT TOWER	-	2
14	PURGE EXH. SOL. V/V	-	2
13	PURGE EXH. V/V	PT 50A	2
12	PURGE EXH. MUFFLER	PT 50A	2
11	INLET BUTTERFLY VALVE	FLG. 100A	2
10	TOWER SELECTING SOL. V/V	4W 2P	1
9	PRESSURE RELIEF VALVE	FLG. 32A	1
8	POWER ON/OFF SWITCH	250V 6A	1
7	INSTRUMENT AIR FILTER	PT 15A	1
6	PURGE PRESSURE GAUGE	PT 8A	1
5	PURGE ORIFICE UNION	PT 40A	1
4	PURGE ADJUSTMENT VALVE	PT 40A	1
3	TOWER PRESSURE GAUGE	PF 8A	2
2	PURGE CHECK VALVE	PT 40A	2
1	OUTLET CHECK VALVE	FLG. 100A	2

△										
△										
△										
△										
△	2018.12.10	ISSUED FOR PROPOSAL	-	-	-	-	-	-	-	
REV. NO.	DATE	DESCRIPTION	DWG	CHK	APPD	APPD	APPD	APPD		
PROJECT										
MANUFACTURER										
TITLE										
PHL-2000 OUTLINE										
ITEM NO.	PHL-2000	DWG NO.								REV.
SCALE	NONE	GSA-PHL-2000-01							△	

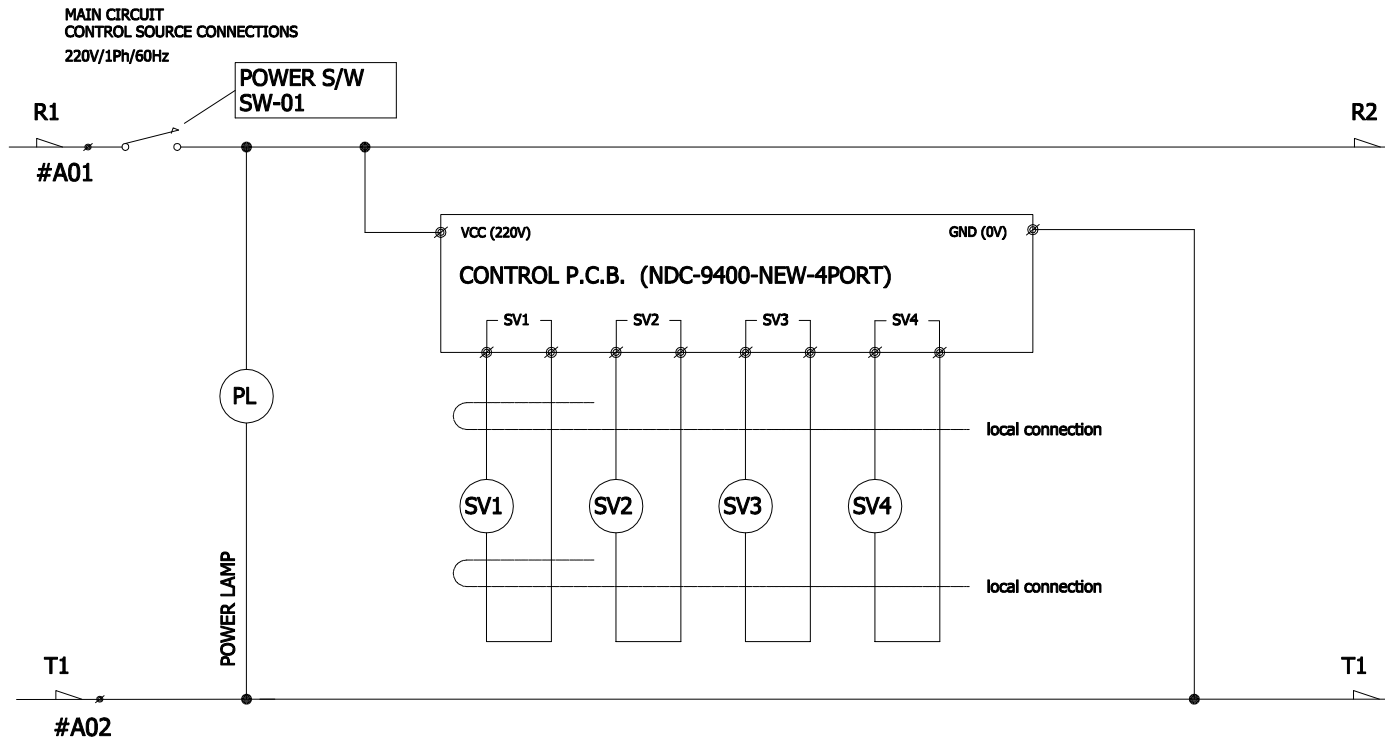


SYMBOL	DESCRIPTION	NO.	NOTE
	CHECK VALVE	1	LINE SYMBOLS FOR FLOW DIRECTION. LEFT TOWER DRYING RIGHT TOWER REGENERATING PILOT AIR LINE ELECTRIC CONNECTION
	MUFFLER	2	SOLENOID VALVES 1SOL AND 4SOL ARE SHOWN ENERGIZED. SOLENOID VALVES 2SOL AND 3SOL ARE SHOWN DE-ENERGIZED.
	SAFETY VALVE	3	** INDICATES OPTIONAL PARTS FOR HIGH D.P. ALARM OR DEMAND CYCLE.
	PRESSURE GAUGE		
	PRESSURE SWITCH		
	ORIFICE		
	GATE VALVE		


* 18	D.P. SENSOR ISOLATION VALVE(V14)
* 17	DEW POINT SENSOR ASSEMBLY
* 16	D.P. SENSOR PREFILTER
* 15	D.P. SENSOR ISOLATION VALVE(V13)
14	PURGE EXH. PILOT SOLENOID VALVE
13	DESICCANT TOWERS
12	AIR FILTER FOR VALVE CONTROL
11	PURGE FLOW ADJUSTMENT VALVE(V12)
10	PURGE FLOW ORIFICE
9	TOWER PRESSURE GAUGE
8	TOWER PRESSURE GAUGES
7	OUTLET CHECK VALVE(V10/V11)
6	PURGE CHECK VALVE(V8/V9)
5	TOWER SAFETY RELIEF VALVE(V6/V7)
4	TOWER SELECTING SOL. VALVE(V5)
3	PURGE EXHAUST MUFFLER
2	PURGE EXHAUST VALVE(V3/V4)
1	INLET VALVE(V1/V2)
NO.	DESCRIPTION

ENCLOSURE
CONTROL POWER
220V - 1P - 60Hz

△										
△										
△										
△										
△										
△										
△										
△										
△										
△	2018.12.10	ISSUED FOR PROPOSAL								
REV. NO.	DATE	DESCRIPTION	DWG	CHK	APPD	APPD	APPD			
PROJECT										
MANUFACTURER										
TITLE										
PHL-2000 SYSTEM										
ITEM NO.	PHL-2000	DWG NO.								REV.
SCALE	NONE	GSA-PHL-2000-02								



SV1	B-TOWER INLET
SV2	B-TOWER PURGE
SV3	A-TOWER INLET
SV4	A-TOWER PURGE

△									
△									
△									
△									
△									
△	2018.12.10	ISSUED FOR PROPOSAL	-	-	-	-	-	-	-
REV. NO.	DATE	DESCRIPTION	DWG	CHK	APP'D	APP'D	APP'D	APP'D	APP'D
PROJECT									
MANUFACTURER									
 Global Standard Air & Gas									
TITLE									
PHL-2000 WIRING									
ITEM NO.	PHL-2000	DWG NO.		REV.					
SCALE	NONE	GSA-PHL-2000-03		△					