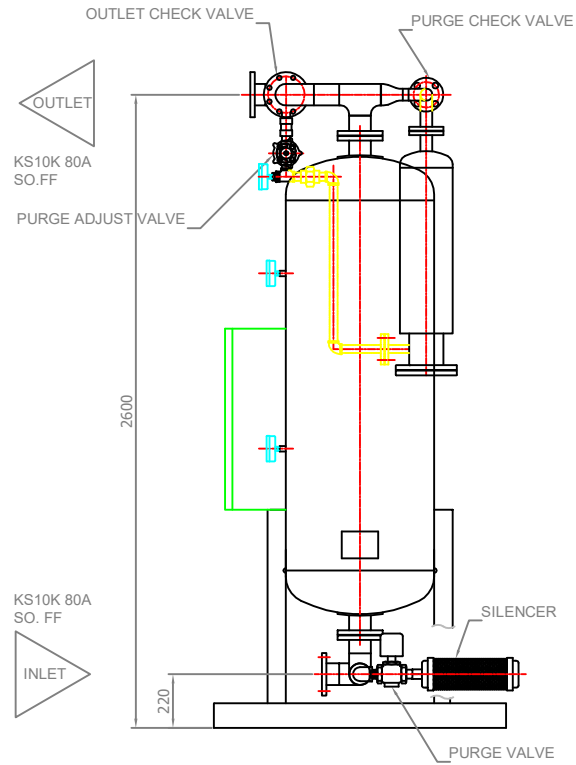
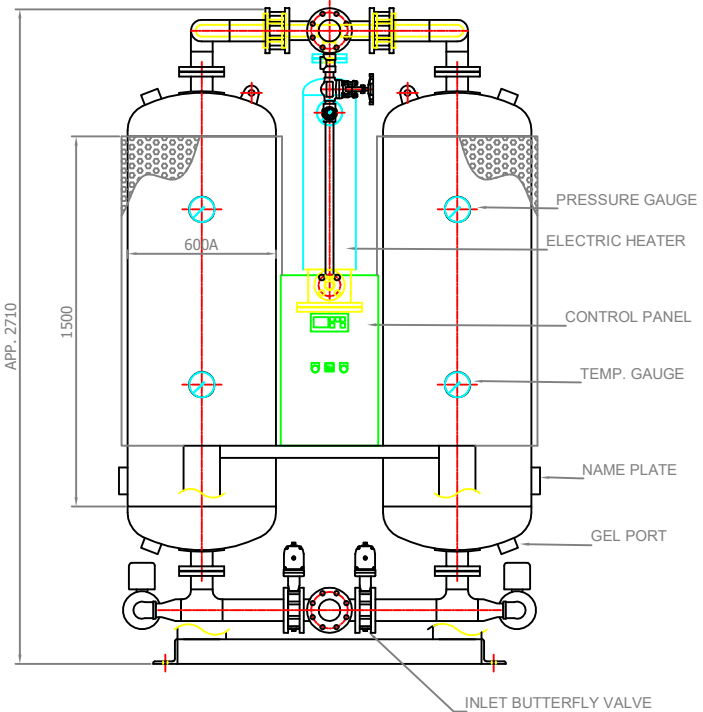
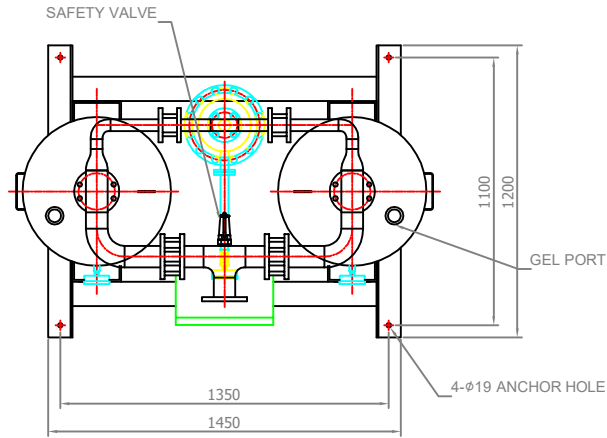

		Desiccant Air Dryer Heater Purge Type		Rev.	Date	Prepared By	Checked By	Approved By
				1	2019.01.15	LEE.S.M.	JO.S.J.	KIM.H.W.
Project No		-		Model Name		PEH-900		
MECHANICAL DESIGN DATA								
2	Supply Voltage	380V		Inlet Flow Rate	1,680		Nm ³ /h	
3	Phase	3PH		Inlet Pressure	7.0		barg	
4	Frequency	60Hz		Inlet Temp.	38		°C	
5	Control use	220V		Outlet Flow Rate	1,545		Nm ³ /h	
6	Fulid	Compressed Air		Outlet Pressure	6.8		barg	
7	Location	Indoor		Outlet Temp.	40		°C	
8	Design Code	Maker STD.		Pressure Drop	0.2		bar	
9	Area Class	Non-Hazardous		Outlet Dew Point	-40		°C at ATM	
10	Purge Fulid	Dried Air		Purge Rate	135		Nm ³ /h	
CONSTRUCTION								
12	Dryer Type	Heater		Design Pressure	9.7		barg	
13	Vessels Design Code	KS B 6750-3		Design Temperature	250		°C	
14	Vessels Corrosion Allowance	1 mm		Ambient Temperature	38		°C	
15	Desiccant	Activated Alumina		Drying Time	240		min	
16	Desiccant Quantity	700 kg/2Tower		Reactivation Time	240		min	
17	Noise	85 dBA		- Heating Time	150		min	
18	Inlet Connection	80A	KS 10K SO.FF.	- Cooling Time	87		min	
19	Outlet Connection	80A	KS 10K SO.FF.	- Repressing Time	3		min	
20	Material			Heater Type	Location	External		
21	- Shell / Head	SS275 / SS275			Method	Electric.		
22	- Flange / Pipe	SS275 / SPP		Heater Power	Main	9	kW	
23	- Heater(Shell/Head)	SPP / SS275			Aux.	4.5	kW	
24	Dimension (W x L x H)	1450 X 1200 X 2710 mm		Control Panel Power	50		W	
25	Weight	1,800 kg		Blower Power	N/A		kW	
26	Color (Munsell)	3.0 BG 7.1/0.2		Power Consumption(Avg.)	8.5		kW	
27	Insulation	NO		Control Unit	Printed Circuit Board (P.C.B)			
28				Enclosure Control Panel	IP23			
INSTRUMENTS-ACCESSORIES								
30	Pressure Gauge	YES		Temperature Controller	YES			
31	Temperature Gauge	YES		Pressure Switch	YES			
32	Thermocouple	YES						
33	Pressure Regulator For Control Air	YES						
34	Instrument Air Filter	YES						
35	Orifice	YES						
OPTION ITEM								
37	Touch Screen	NO		Anchor Bolt / Nut	NO			
38	Valve Limit Switch	NO						
39	Dew Point Meter	NO						
40	Local Control Panel Double Door	NO						
41	Thyristor Power Regulator (S.C.R)	NO						
NOTES								
43								
44								
45								
46								



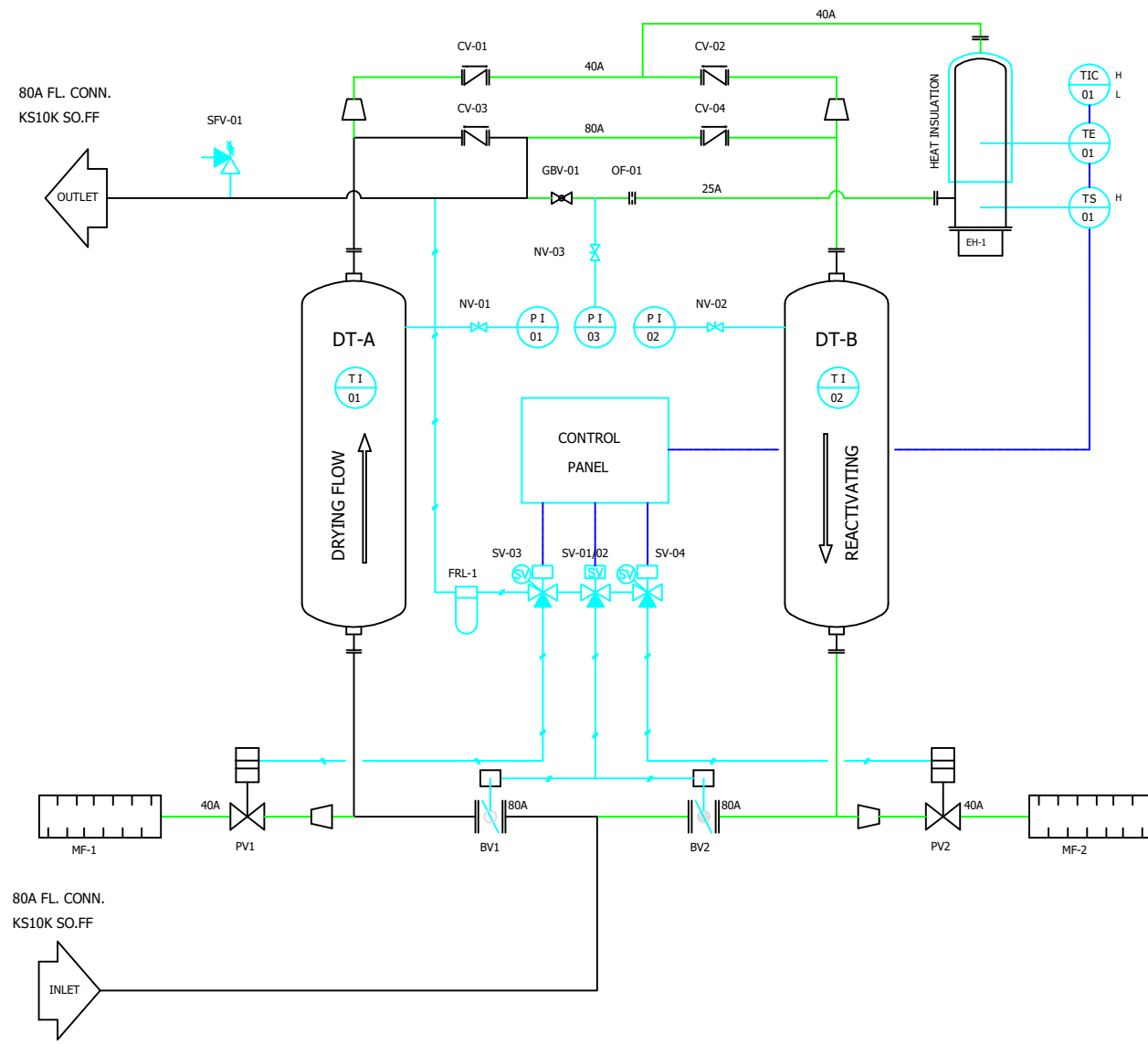
NO	DESCRIPTION	MATL	QTY	SPECIFICATION
1	ELECTRIC HEATER	-	1	13.5 KW
2	INLET BUTTERFLY VALVE	FCD	2	FLANGE 3"
3	OUTLET CHECK VALVE	BRASS	2	FLANGE 3"
4	PURGE CHECK VALVE	304	2	FLANGE 1 1/2"
5	PURGE VALVE	C.I	2	PT 1 1/2"
6	SILENCER	-	2	PT 1 1/2"
7	PRESSURE GAUGE	C.S	3	15bar -100
8	TEMPERATURE GAUGE	C.S	2	250°C -100
9	GEL PORT	-	2	PT 2"
10	GEL PORT	-	2	PT 2"
11	SAFETY VALVE	BRASS	1	PT 1 1/2"
12	NAME PLATE	AL	2	-
13	DRYING TOWER	SPYSS400	2	-
14	PURGE ADJUST VALVE	A105	1	PT 1"
15	A - TOWER INLET VALVE	-	1	-
16	B - TOWER INLET VALVE	-	1	-
17	A - TOWER PURGE VALVE	-	1	-
18	B - TOWER PURGE VALVE	-	1	-
19	CONTROL PANEL	-	1	-


SPECIFICATION		
PROCESS	COMPRESSED AIR	
CAPACITY	1680	Nm ³ /hr
INLET AIR PRESSURE	7	kgf/cm ² G
INLET AIR TEMPERATURE	38	°C
DESIGN PRESSURE	9.7	barg
DEW POINT	-40	°C
NORMAL PURGE	135	Nm ³ /hr
POWER SUPPLY	380V-3PH-60HZ	
CONTROL POWER	220V-1PH-60HZ	
CYCLE TIME	4 + 4 HOURS	
DESICCANT	700	kg/2TOWER
HEATER	13.5	KW
COLOR	3.OBG 7.1/0.2	
WEIGHT	1800	kg

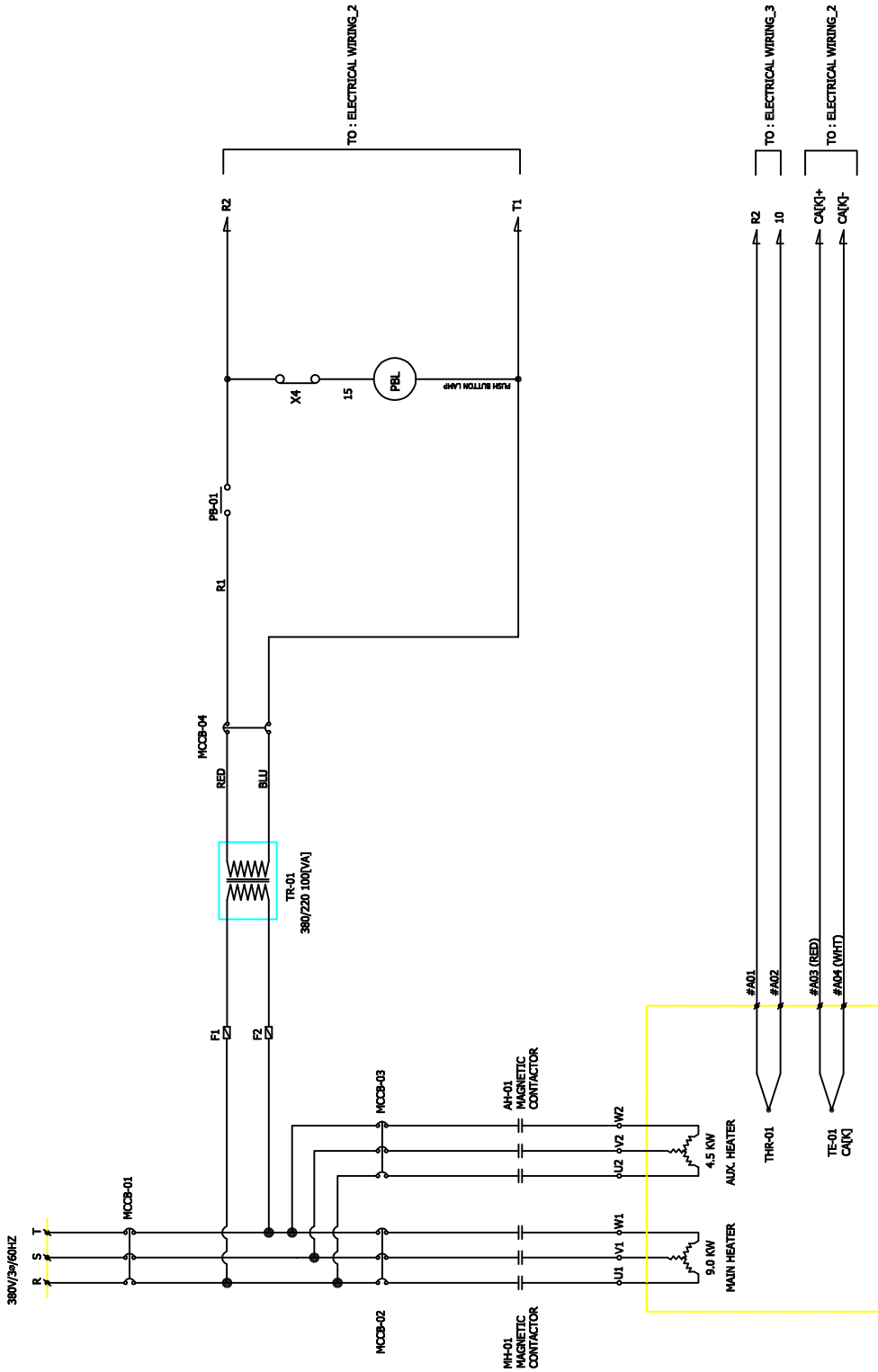
△											
△											
△											
△											
△											
△	2018.12.10	ISSUED FOR PROPOSAL									
REV.	NO.	DATE	DESCRIPTION	ENG	CHK	APPD	APPD	APPD			
PROJECT											
MANUFACTURER											
 GSA Global Standard Air & Gas											
TITLE											
PEH-900 OUTLINE											
ITEM NO.	PEH-900	DWG NO.	GSA-PEH-0900-01							REV.	△
SCALE	NONE										

SYMBOL	DESCRIPTION	SYMBOL	DESCRIPTION	SYMBOL	DESCRIPTION	SYMBOL	DESCRIPTION	SYMBOL	DESCRIPTION
	BALL VALVE (NOR.OPEN)		SAFETY VALVE		INSTRUMENT AIR LINE		DRYER TOWER		NEEDLE VALVE
	BALL VALVE (NOR.CLOSE)		SOLENOID VALVE (SINGLE)		ELECTRIC LINE		THERMOSTAT		GLOBE VALVE
	GLOBE VALVE		SOLENOID VALVE (DOUBLE)		TEMPERATURE GAUGE		SOLENOID VALVE		SAFETY VALVE
	NEEDLE VALVE		BUTTERFLY VALVE		PRESSURE GAUGE		PURGE VALVE		
	CHECK VALVE		AUTO DRAIN TRAP		ELECTRIC HEATER		AIR UNIT		
	GATE VALVE		LUB. OIL LINE		BUTTERFLY VALVE		SILENCER		

DESIGN DATA	
NO	DESCRIPTIONS
01	MODEL NO. PEH-900
02	APPLICATION FLUID COMPRESSED AIR
03	FLOW RATE 1680 Nm ³ /hr
04	OUTLET DEW POINT -40 °C @ ATM
05	INLET AIR PRESSURE 7.0 barg
06	INLET AIR TEMP. 38 °C
07	DRY/REGEN. CYCLE 4 HOURS + 4 HOURS
08	DESIGN PRESSURE 9.7 barg
09	DESIGN TEMP. 250 °C
10	HYDRAULIC TEST PR. 15 barg
11	INLET NOZZLE 80A KS 10K SO. FF.
12	OUTLET NOZZLE 80A KS 10K SO. FF.
13	ELECTRICITY 380V/3Ph/60Hz
14	VESSELS DUAL/VERTICALLY ELEVATED.
15	DESICCANT ACTIVATED ALUMINA
16	ACTIVATED ALUMINA 700 kg/2Tower
17	SIZE OF HEATER 13.5 KW



△											
△											
△											
△											
△											
△	2018.12.10	ISSUED FOR PROPOSAL									
REV.	DATE	DESCRIPTION	ENGR	CHK	APP'D	APP'D	APP'D				
PROJECT											
MANUFACTURER											
 Global Standard Air & Gas											
TITLE											
PEH-900 SYSTEM											
ITEM NO.	PEH-900	DWG NO.	GSA-PEH-0900-02							REV.	△
SCALE	NONE										



REV.	DATE	ISSUED FOR PROPOSAL	ISSUED FOR PROPOSAL	DATE	DESCRIPTION	DATE	CHK.	APPD.	APPD.
1									
2									
3									
4									
5									
6									
7									
8									

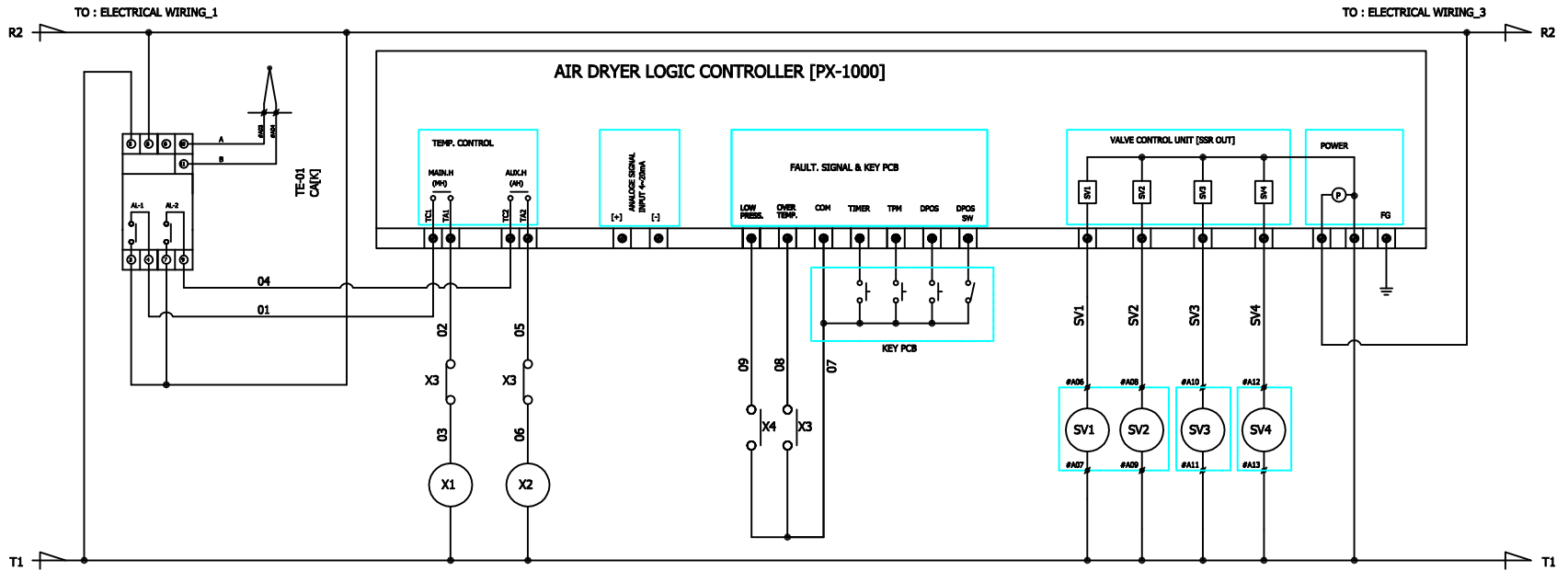
MANUFACTURER

GSA
Global Service America, Inc.

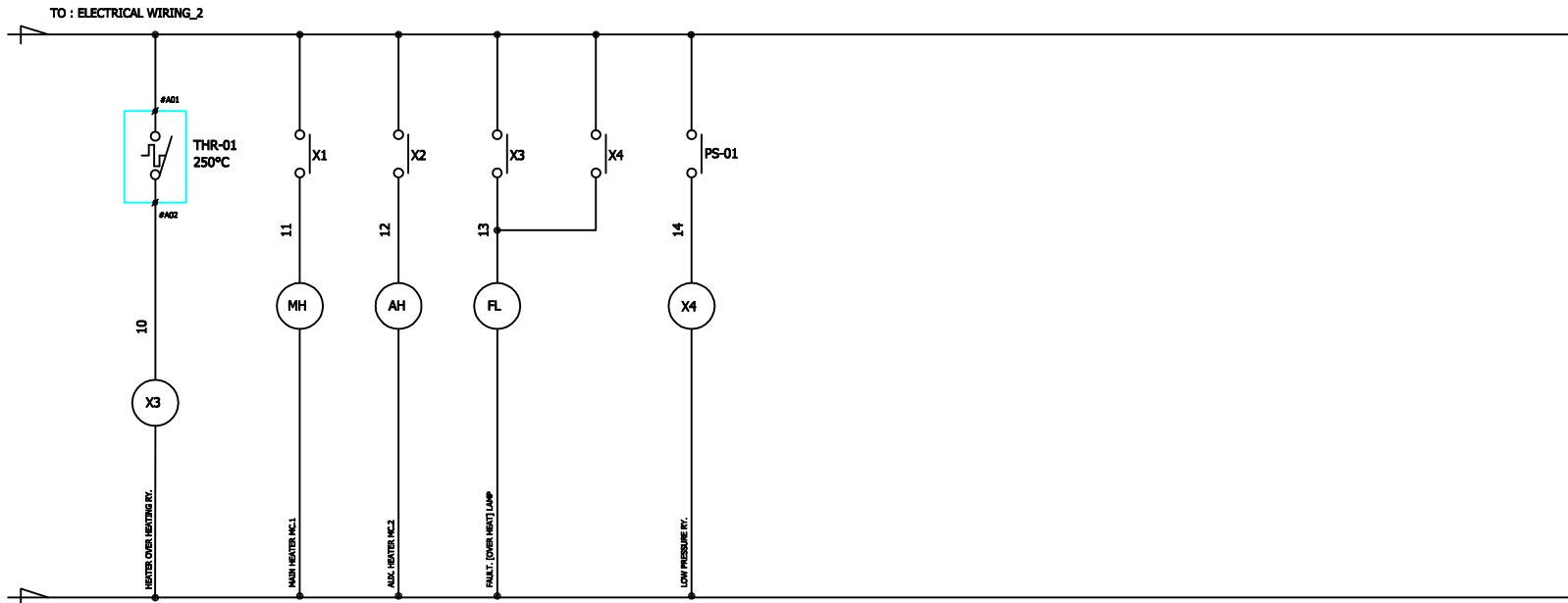
TITLE
PEH-900 WIRING

ITEM NO.	REV.	DATE	DESCRIPTION
1	1		

PROJECT



△										
△										
△										
△										
△										
△	2018.12.10	ISSUED FOR PROPOSAL	-	-	-	-	-	-	-	
REV.	DATE	DESCRIPTION	EWG	CHK	APPD	APPD	APPD	APPD		
PROJECT										
MANUFACTURER										
TITLE										
PEH-900 WIRING										
ITEM NO.	PEH-900	DWG NO.								REV.
SCALE	NONE	GSA-PEH-0900-04							△	



△									
△									
△									
△									
△	2018.12.10	ISSUED FOR PROPOSAL	-	-	-	-	-	-	-
REV.	DATE	DESCRIPTION	DRWG	CHK	APP'D	APP'D	APP'D	APP'D	
PROJECT									
MANUFACTURER									
TITLE									
PEH-900 WIRING									
ITEM NO.	PEH-900	DRWG NO.							
SCALE	NONE	GSA-PEH-0900-05							
									REV. △