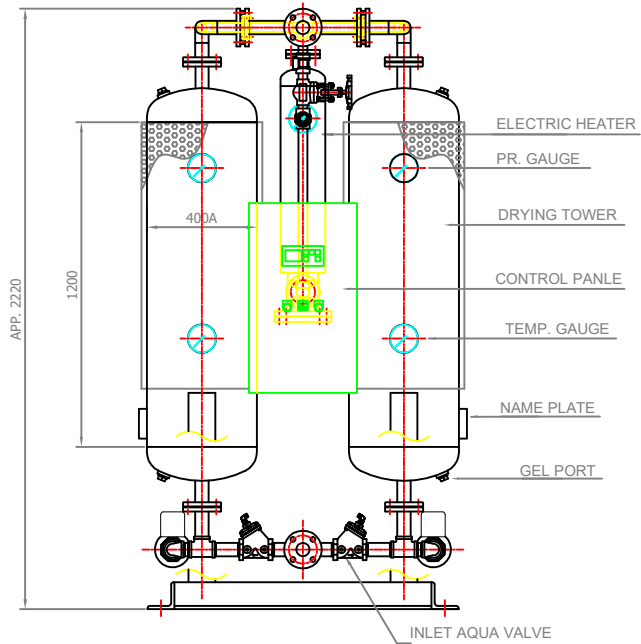
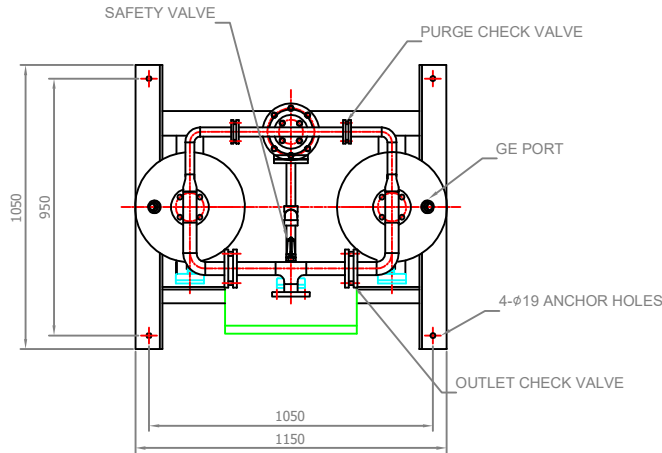
	Desiccant Air Dryer		Rev.	Date	Prepared By	Checked By	Approved By
			1	2019.01.15	LEE.S.M.	JO.S.J.	KIM.H.W.
	Heater Purge Type		2				
			3				
			4				
Project No		-	Model Name		PEH-285		
MECHANICAL DESIGN DATA							
2	Supply Voltage	380V	Inlet Flow Rate	495	Nm3/h		
3	Phase	3PH	Inlet Pressure	7.0	barg		
4	Frequency	60Hz	Inlet Temp.	38	°C		
5	Control use	220V	Outlet Flow Rate	455	Nm3/h		
6	Fulid	Compressed Air	Outlet Pressure	6.8	barg		
7	Location	Indoor	Outlet Temp.	40	°C		
8	Design Code	Maker STD.	Pressure Drop	0.2	bar		
9	Area Class	Non-Hazardous	Outlet Dew Point	-40	°C at ATM		
10	Purge Fulid	Dried Air	Purge Rate	40	Nm3/h		
CONSTRUCTION							
12	Dryer Type	Heater	Design Pressure	9.7	barg		
13	Vessels Design Code	KS B 6750-3	Design Temperature	250	°C		
14	Vessels Corrosion Allowance	1 mm	Ambient Temperature	38	°C		
15	Desiccant	Activated Alumina	Drying Time	240	min		
16	Desiccant Quantity	210 kg/2Tower	Reactivation Time	240	min		
17	Noise	85 dBA	- Heating Time	150	min		
18	Inlet Connection	40A KS 10K SO.FF.	- Cooling Time	87	min		
19	Outlet Connection	40A KS 10K SO.FF.	- Repressing Time	3	min		
20	Material		Heater Type	Location	External		
21	- Shell / Head	SPP / SS275		Method	Electric.		
22	- Flange / Pipe	SS275 / SPP	Heater Power	Main	4.5	kW	
23	- Heater(Shell/Head)	SPP / SS275		Aux.	-	kW	
24	Dimension (W x L x H)	1150 X 1050 X 2300 mm	Control Panel Power	50	W		
25	Weight	750 kg	Blower Power	N/A	kW		
26	Color (Munsell)	3.0 BG 7.1/0.2	Power Consumption(Avg.)	2.9	kW		
27	Insulation	NO	Control Unit	Printed Circuit Board (P.C.B)			
28			Enclosure Control Panel	IP23			
INSTRUMENTS-ACCESSORIES							
30	Pressure Gauge	YES	Temperature Controller	YES			
31	Temperature Gauge	YES	Pressure Switch	YES			
32	Thermocouple	YES					
33	Pressure Regulator For Control Air	YES					
34	Instrument Air Filter	YES					
35	Orifice	YES					
OPTION ITEM							
37	Touch Screen	NO	Anchor Bolt / Nut	NO			
38	Valve Limit Switch	NO					
39	Dew Point Meter	NO					
40	Local Control Panel Double Door	NO					
41	Thyristor Power Regulator (S.C.R)	NO					
NOTES							
43							
44							
45							
46							



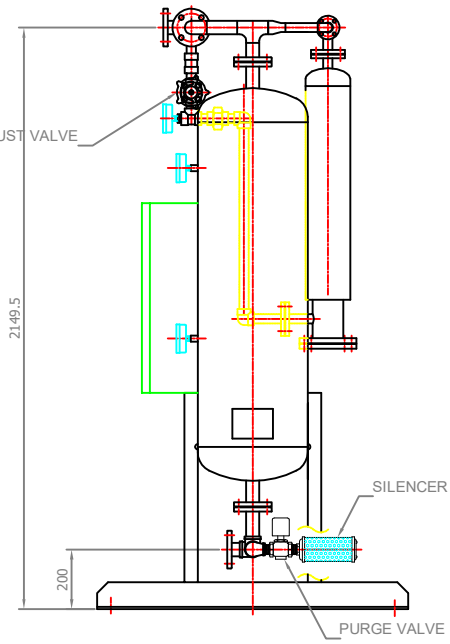
KS10K SO.FF.
40A FLANGE



PURGE ADJUST VALVE



KS10K SO.FF.
40A FLANGE



NO	DESCRIPTION	MAT'L	QTY	SPECIFICATION
1	ELECTRIC HEATER	-	1	4.5 KW
2	INLET AQUA VALVE	GCD450	2	PT 1 1/2"
3	OUTLET CHECK VALVE	BRASS	2	FLANGE 1 1/2"
4	PURGE CHECK VALVE	304	2	FLANGE 1"
5	PURGE VALVE	C.I	2	PT 1 1/4"
6	SILENCER	-	2	PT 1 1/2"
7	PRESSURE GAUGE	C.S	3	15 bar-100
8	TEMPERATURE GAUGE	C.S	2	250°C-100
9	GEL PORT	-	2	PT 1 1/2"
10	GEL PORT	-	2	PT 1 1/2"
11	SAFETY VALVE	BRASS	1	PT 1"
12	NAME PLATE	AL	2	-
13	DRYING TOWER	SP955400	2	-
14	PURGE ADJUST VALVE	A105	1	PT 1"
15	A - TOWER INLET VALVE	-	1	-
16	B - TOWER INLET VALVE	-	1	-
17	A - TOWER PURGE VALVE	-	1	-
18	B - TOWER PURGE VALVE	-	1	-
19	CONTROL PANEL	-	1	-

SPECIFICATION		
1	PROCESS	COMPRESSED AIR
2	CAPACITY	495 Nm ³ /hr
3	INLET AIR PRESSURE	7 barg
4	INLET AIR TEMPERATURE	38 °C
5	DESIGN PRESSURE	9.7 barg
6	DEW POINT	-40 °C
7	NORMAL PURGE	40 Nm ³ /hr
8	POWER SUPPLY	380V-3PH-60HZ
9	CONTROL POWER	220V-1PH-60HZ
10	CYCLE TIME	4 + 4 HOURS
11	DESICCANT	210 kg/2TOWERS
12	HEATER	4.5 kW
13	COLOR	3.0BG 7.1/0.2
14	WEIGHT	750 kg

REVISION			
REV.	DESCRIPTION	DATE	DWG. BY

△									
△									
△									
△									
△									
△									
△									
△									
△									
△	2018.12.10	ISSUED FOR PROPOSAL	-	-	-	-	-	-	-
REV.	DATE	DESCRIPTION	DWG.	CHK.	APPD.	APPD.	APPD.	APPD.	APPD.
PROJECT									

MANUFACTURER

TITLE

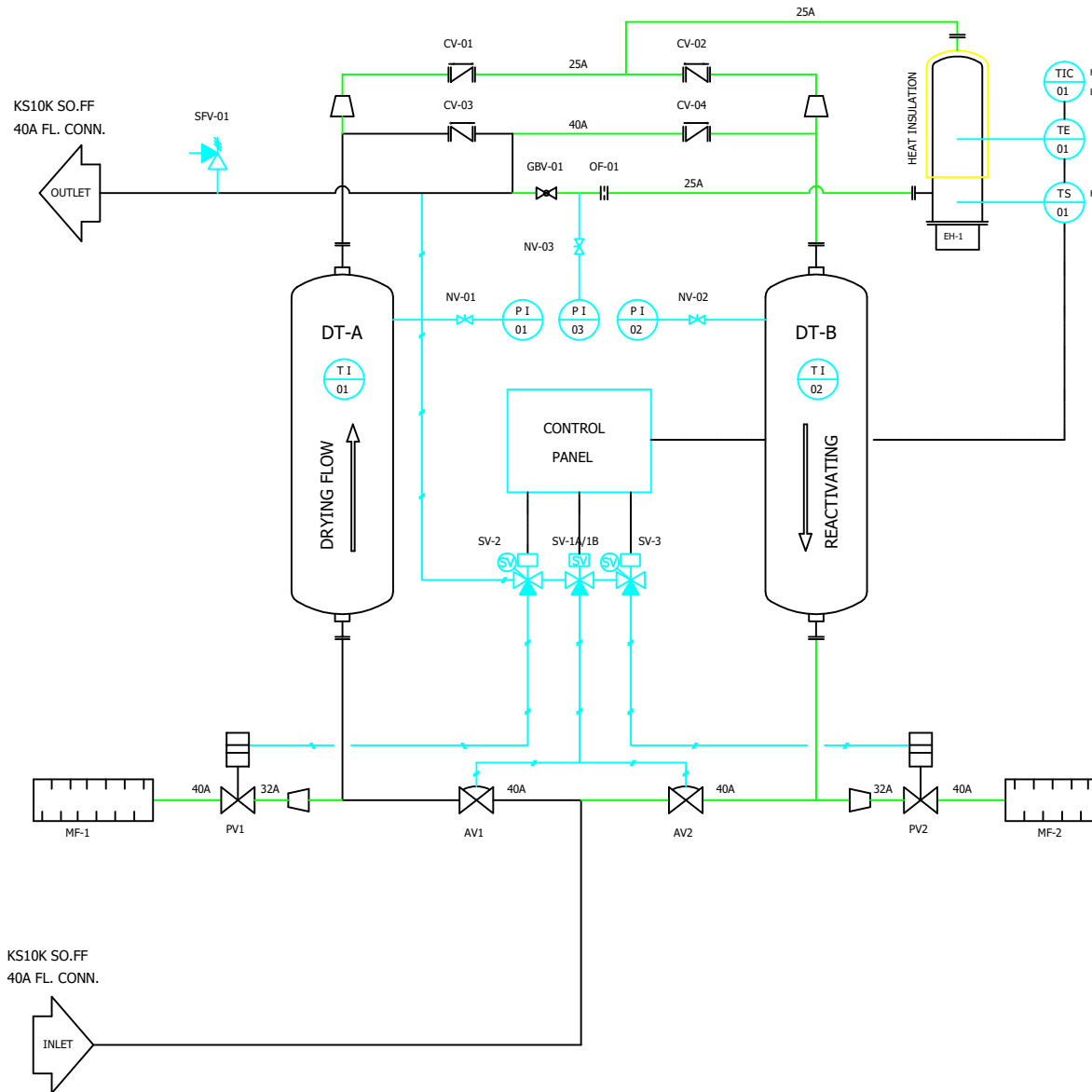
PEH-285 OUTLINE

ITEM NO.	PEH-285	DWG NO.	GSA-PEH-0285-01	REV.	△
SCALE	NONE				

(A1 : 841mm x 594mm)

SYMBOL	DESCRIPTION	SYMBOL	DESCRIPTION	SYMBOL	DESCRIPTION	SYMBOL	DESCRIPTION	SYMBOL	DESCRIPTION
	BALL VALVE (NOR.OPEN)		SAFETY VALVE		AIR MAIN LINE		DRYER TOWER		NEEDLE VALVE
	BALL VALVE (NOR.CLOSE)		SOLENOID VALVE 2 WAY		INSTRUMENT AIR LINE		ORIFICE		CHECK VALVE
	GLOBE VALVE		SOLENOID VALVE 2 WAY		ELECTRIC LINE		THERMOSTAT		GLOBE VALVE
	NEEDLE VALVE		AQUAMATIC VALVE		TEMPERATURE GAUGE		SOLENOID VALVE		SAFETY VALVE
	CHECK VALVE		AUTO DRAIN TRAP		PRESSURE GAUGE		PURGE VALVE		AQUAMATIC VALVE
	GATE VALVE		LUB. OIL LINE		ELECTRIC HEATER		AIR UNIT		
			X X		4-WAY BALL VALVE		SILENCER		

DESIGN DATA		
NO	DESCRIPTIONS	SPECIFICATIONS
01	MODEL NO.	PEH-285
02	APPLICATION FLUID	COMPRESSED AIR
03	FLOW RATE	495 Nm ³ /hr
04	OUTLET DEW POINT	-40 °C @ ATM
05	INLET AIR PRESSURE	7.0 barg
06	INLET AIR TEMP.	38 °C
07	DRY/REGEN. CYCLE	4 HOURS + 4 HOURS
08	DESIGN PRESSURE	9.7 barg
09	DESIGN TEMP.	250 °C
10	HYDRAULIC TEST PR.	15 barg
11	INLET NOZZLE	40A KS 10K SO. FF.
12	OUTLET NOZZLE	40A KS 10K SO. FF.
13	ELECTRICITY	380V/3Ph/60Hz
14	VESSELS	DUAL/VERTICALLY ELEVATED.
15	DESICCANT	ACTIVATED ALUMINA
16	ACTIVATED ALUMINA	210 kg/2Tower
17	HEATER CAPACITY	4,5 kW



△										
△										
△										
△										
△	2018.12.10	ISSUED FOR PROPOSAL								
REV.	DATE	DESCRIPTION	ENGR	CHK	APPD	APPD	APPD	APPD	APPD	
PROJECT										
MANUFACTURER										
TITLE										
PEH-285 SYSTEM										
ITEM NO.	PEH-285	DWG NO.								REV.
SCALE	NONE	GSA-PEH-0285-02							△	

380V/3ø/60HZ

R S T

MCCB-01

MCCB-02

MH-01
MAGNETIC
CONTACTOR

U1 V1 W1

4.5 KW
MAIN HEATER

F1

F2

MCCB-03

R1

PB-01

R2

X3

12

PBL

PUSH BUTTON LAMP

TO : ELECTRICAL WIRING_2

T1

THR-01

#A01

#A02

R2

07

TO : ELECTRICAL WIRING_3

TE-01

CA[K]


#A03

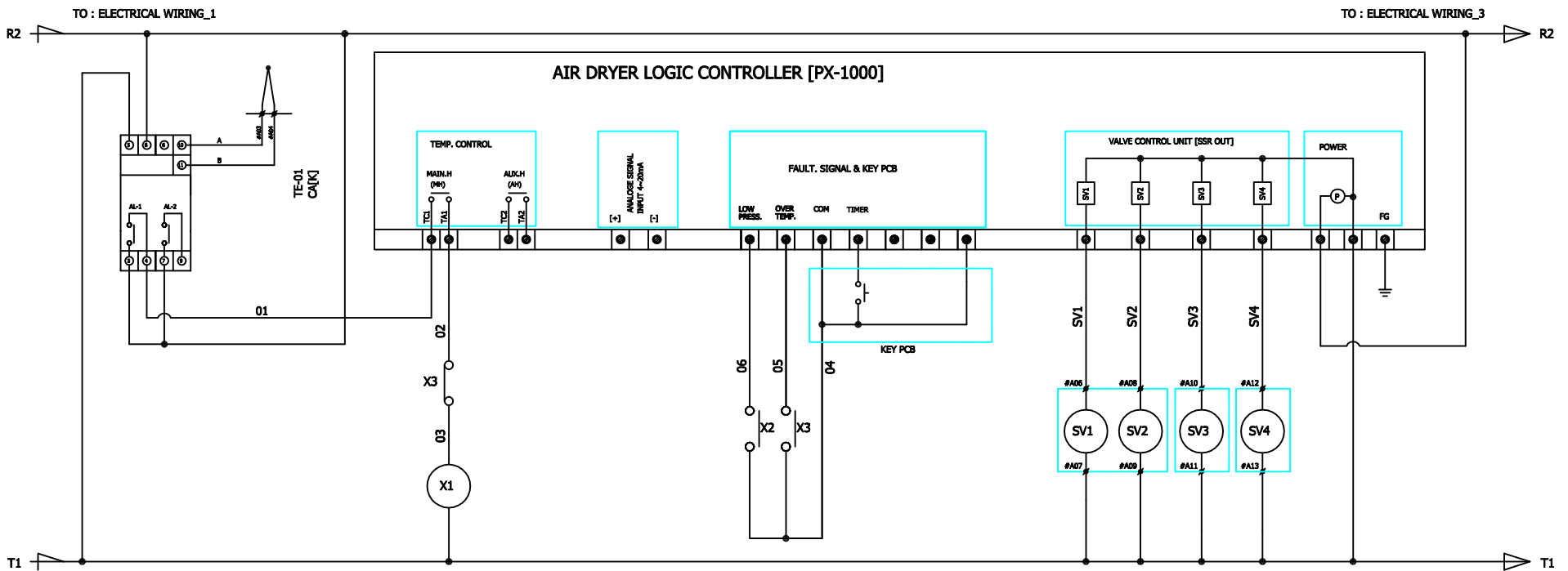
#A04

CA[K]+

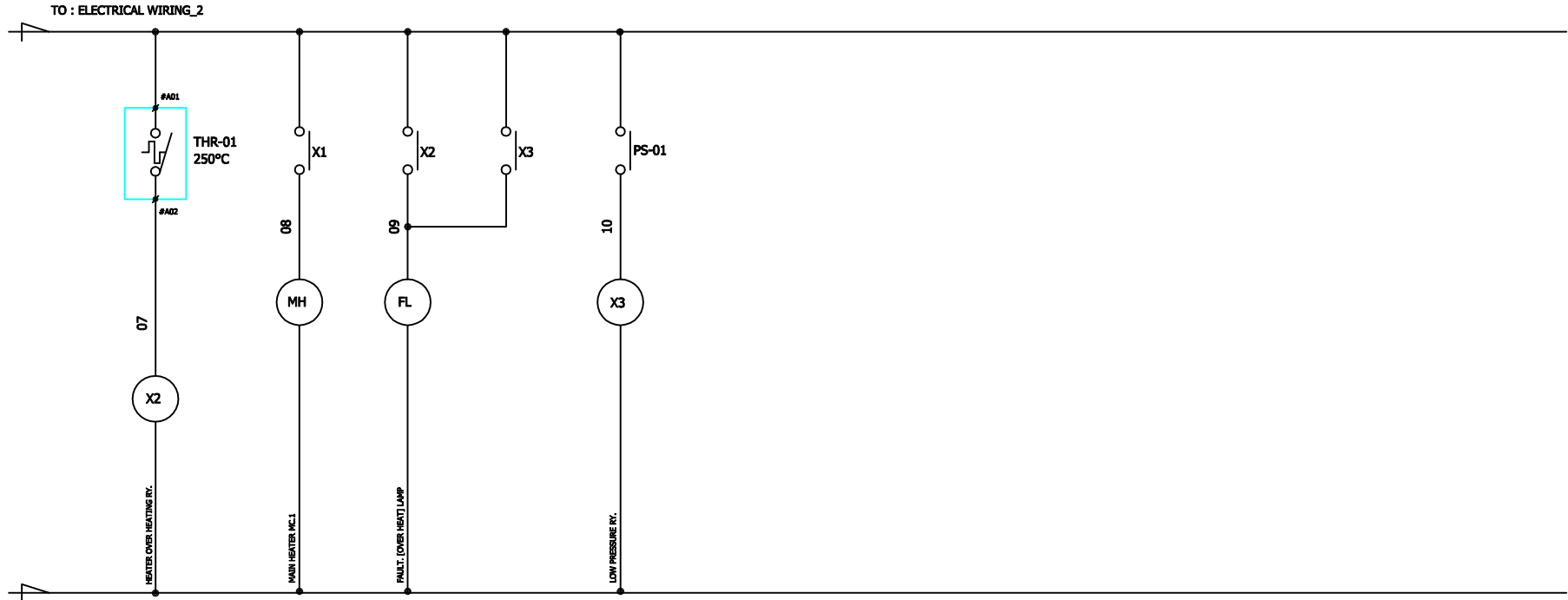
CA[K]-

TO : ELECTRICAL WIRING_2

△										
△										
△										
△										
△	2018.12.10	ISSUED FOR PROPOSAL	-	-	-	-	-	-	-	
REV.	DATE	DESCRIPTION	ENG	CHK	APPD	APPD	APPD	APPD		
PROJECT										
MANUFACTURER										
 Global Standard Air & Gas										
TITLE										
PEH-285 WIRING										
ITEM NO.	PEH-285	DWG NO.								REV.
SCALE	NONE	GSA-PEH-0285-03							△	



△										
△										
△										
△										
△	2018.12.10	ISSUED FOR PROPOSAL	-	-	-	-	-	-	-	
REV.	DATE	DESCRIPTION	DRWG	CHK	APP'D	APP'D	APP'D	APP'D		
PROJECT										
MANUFACTURER										
TITLE										
PEH-285 WIRING										
ITEM NO.	PEH-285	DRWG NO.								REV.
SCALE	NONE	GSA-PEH-0285-04							△	



△									
△									
△									
△									
△									
△	2018.12.10	ISSUED FOR PROPOSAL	-	-	-	-	-	-	-
REV.	DATE	DESCRIPTION	ENGR	CHK	APP'D	APP'D	APP'D	APP'D	
PROJECT									
MANUFACTURER									
TITLE									
PEH-285 WIRING									
ITEM NO.	PEH-285	DWG NO.		GSA-PEH-0285-05			REV.		
SCALE	NONE								