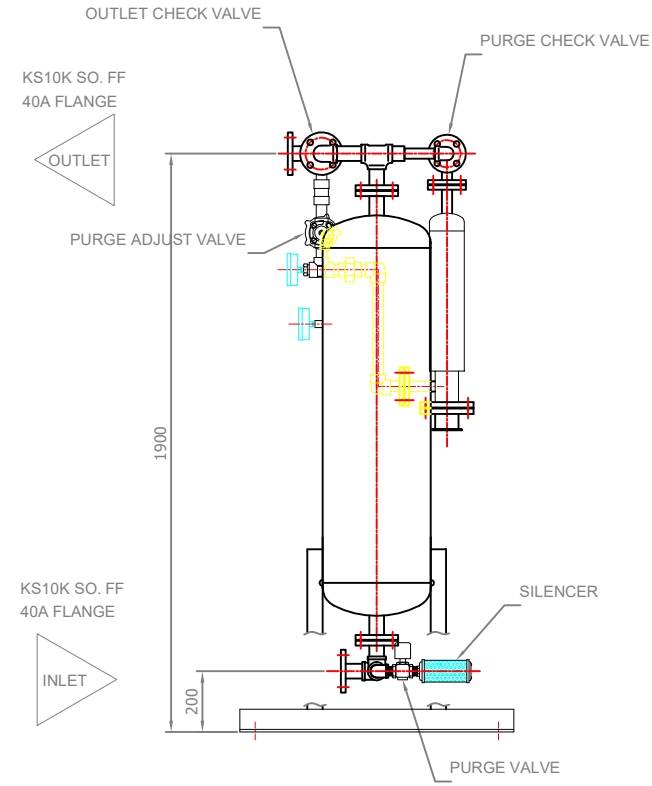
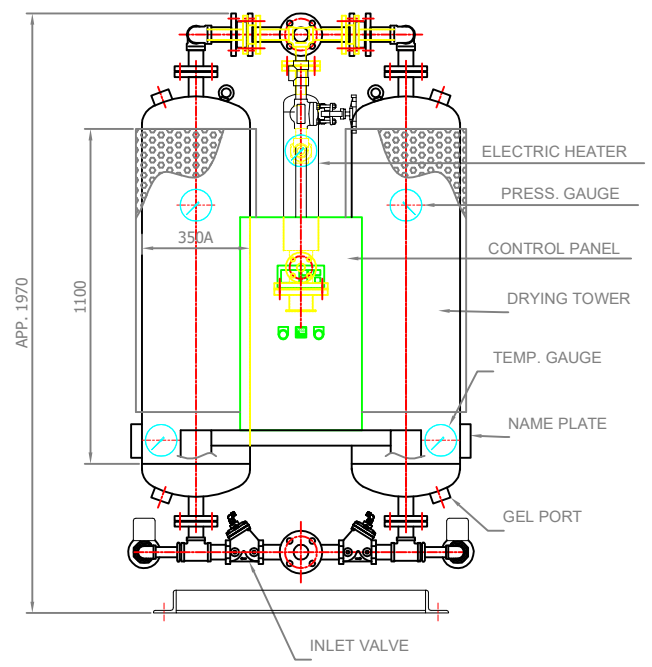
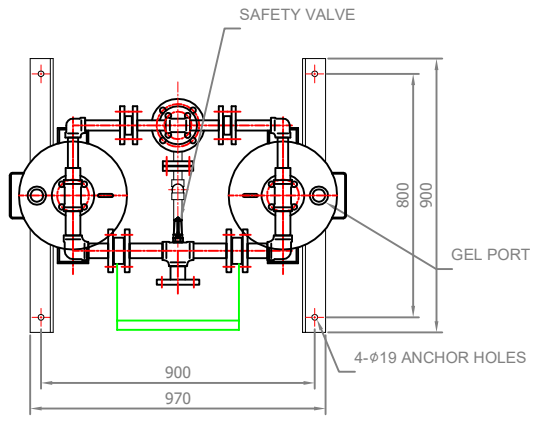
		Desiccant Air Dryer Heater Purge Type		Rev.	Date	Prepared By	Checked By	Approved By
				1	2019.01.15	LEE.S.M.	JO.S.J.	KIM.H.W.
Project No		-		Model Name		PEH-200		
MECHANICAL DESIGN DATA								
2	Supply Voltage	380V		Inlet Flow Rate	370		Nm ³ /h	
3	Phase	3PH		Inlet Pressure	7.0		barg	
4	Frequency	60Hz		Inlet Temp.	38		°C	
5	Control use	220V		Outlet Flow Rate	340		Nm ³ /h	
6	Fulid	Compressed Air		Outlet Pressure	6.8		barg	
7	Location	Indoor		Outlet Temp.	40		°C	
8	Design Code	Maker STD.		Pressure Drop	0.2		bar	
9	Area Class	Non-Hazardous		Outlet Dew Point	-40		°C at ATM	
10	Purge Fulid	Dried Air		Purge Rate	30		Nm ³ /h	
CONSTRUCTION								
12	Dryer Type	Heater		Design Pressure	9.7		barg	
13	Vessels Design Code	KS B 6750-3		Design Temperature	250		°C	
14	Vessels Corrosion Allowance	1 mm		Ambient Temperature	38		°C	
15	Desiccant	Activated Alumina		Drying Time	240		min	
16	Desiccant Quantity	170 kg/2Tower		Reactivation Time	240		min	
17	Noise	85 dBA		- Heating Time	150		min	
18	Inlet Connection	40A	KS 10K SO.FF.	- Cooling Time	87		min	
19	Outlet Connection	40A	KS 10K SO.FF.	- Repressing Time	3		min	
20	Material			Heater Type	Location	External		
21	- Shell / Head	SPP / SS275			Method	Electric.		
22	- Flange / Pipe	SS275 / SPP		Heater Power	Main	4	kW	
23	- Heater(Shell/Head)	SPP / SS275			Aux.	-	kW	
24	Dimension (W x L x H)	970 X 900 X 1970 mm		Control Panel Power	50		W	
25	Weight	700 kg		Blower Power	N/A		kW	
26	Color (Munsell)	3.0 BG 7.1/0.2		Power Consumption(Avg.)	2.6		kW	
27	Insulation	NO		Control Unit	Printed Circuit Board (P.C.B)			
28				Enclosure Control Panel	IP23			
INSTRUMENTS-ACESSORIES								
30	Pressure Gauge	YES		Temperature Controller	YES			
31	Temperature Gauge	YES		Pressure Switch	YES			
32	Thermocouple	YES						
33	Pressure Regulator For Control Air	YES						
34	Instrument Air Filter	YES						
35	Orifice	YES						
OPTION ITEM								
37	Touch Screen	NO		Anchor Bolt / Nut	NO			
38	Valve Limit Switch	NO						
39	Dew Point Meter	NO						
40	Local Control Panel Double Door	NO						
41	Thyristor Power Regulator (S.C.R)	NO						
NOTES								
43								
44								
45								
46								



NO	DESCRIPTION	MAT'L	Q'TY	SPECIFICATION
1	ELECTRIC HEATER	-	1	4 KW
2	INLET AQUA VALVE	GCD	2	PT 1 1/2"
3	OUTLET CHECK VALVE	BRASS	2	FLANGE 1 1/2"
4	PURGE CHECK VALVE	304	2	FLANGE 1"
5	PURGE VALVE	C.I	2	PT 1"
6	SILENCER	-	2	PT 1"
7	PRESSURE GAUGE	C.S	3	15bar - Ø100
8	TEMPERATURE GAUGE	C.S	2	250°C - Ø100
9	GEL PORT	-	2	PT 1 1/2"
10	GEL PORT	-	2	PT 1 1/2"
11	SAFETY VALVE	BRASS	1	PT 3/4"
12	NAME PLATE	AL	2	-
13	DRYING TOWER	SPPSS400	2	-
14	PURGE ADJUST VALVE	A105	1	PT 1"
15	A - TOWER INLET VALVE	-	1	-
16	B - TOWER INLET VALVE	-	1	-
17	A - TOWER PURGE VALVE	-	1	-
18	B - TOWER PURGE VALVE	-	1	-
19	CONTROL PANEL	-	1	-

SPECIFICATION		
1	PROCESS	COMPRESSED AIR
2	CAPACITY	370 Nm ³ /hr
3	INLET AIR PRESSURE	7 kg/cm ² G
4	INLET AIR TEMPERATURE	38 °C
5	DESIGN PRESSURE	9.7 barg
6	DEW POINT	-40 °C
7	NORMAL PURGE	30 Nm ³ /hr
8	POWER SUPPLY	380V-3PH-60HZ
9	CONTROL POWER	220V-1PH-60HZ
10	CYCLE TIME	4 + 4 HOURS
11	DESICCANT	170 kg/2TOWERS
12	HEATER	4 KW
13	COLOR	3.OBG 7.1/0.2
14	WEIGHT	700 kg

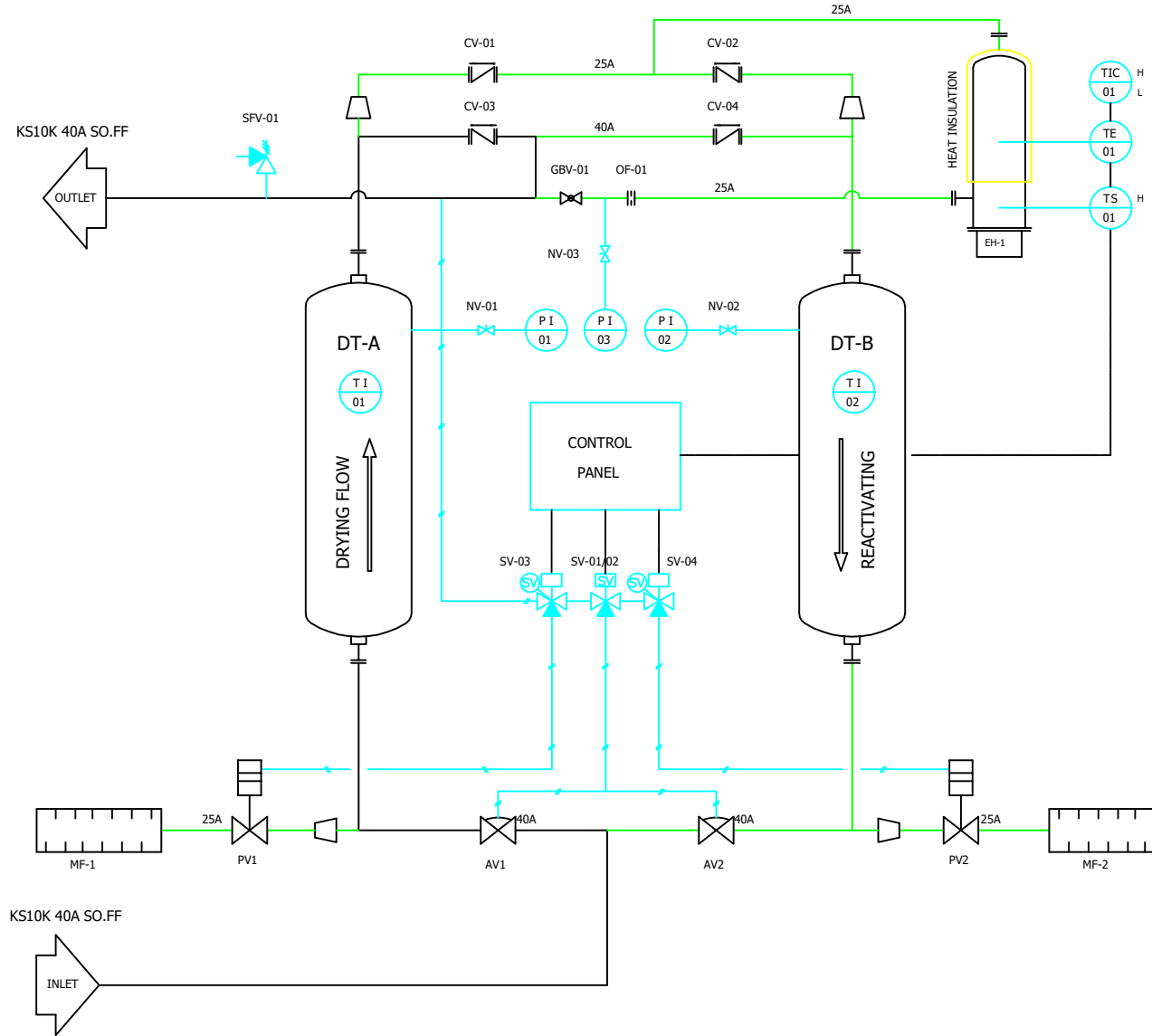
REVISION			
REV.	DESCRIPTION	DATE	DWG. BY

Δ									
Δ									
Δ									
Δ									
Δ									
Δ									
Δ	2018.12.10	ISSUED FOR PROPOSAL	-	-	-	-	-	-	-
REV.	DATE	DESCRIPTION	DWG	CHK	APP'D	APP'D	APP'D		

MANUFACTURER		GSA Global Standard Air & Gas	
TITLE			
PEH-200 OUTLINE			
ITEM NO.	PEH-200	DWG NO.	REV. Δ
SCALE	NONE		GSA-PEH-0200-01
		1 (A1 : 841mm x 594mm)	

SYMBOL	DESCRIPTION	SYMBOL	DESCRIPTION	SYMBOL	DESCRIPTION	DT	DRYER TOWER	NV	NEEDLE VALVE
	BALL VALVE (NOR.OPEN)		SAFETY VALVE		INSTRUMENT AIR LINE	OF	ORIFICE	CV	CHECK VALVE
	BALL VALVE (NOR.CLOSE)		SOLENOID VALVE(SINGLE)		ELECTRIC LINE	TS	THERMOSTAT	GBV	GLOBE VALVE
	GLOBE VALVE		SOLENOID VALVE(DOUBLE)	TI	TEMPERATURE GAUGE	SV	SOLENOID VALVE	SVV	SAFETY VALVE
	NEEDLE VALVE		AQUAMATIC VALVE	PI	PRESSURE GAUGE	PV	PURGE VALVE	AV	AQUAMATIC VALVE
	CHECK VALVE		AUTO DRAIN TRAP	EH	ELECTRIC HEATER	FRL	AIR UNIT		
	GATE VALVE	X X	LUB. OIL LINE	FV	4-WAY BALL VALVE	MF	SILENCER		

DESIGN DATA		
NO	DESCRIPTIONS	SPECIFICATIONS
01	MODEL NO.	PEH-200
02	APPLICATION FLUID	COMPRESSED AIR
03	FLOW RATE	370 Nm ³ /hr
04	OUTLET DEW POINT	-40 °C @ ATM
05	INLET AIR PRESSURE	7.0 barg
06	INLET AIR TEMP.	38 °C
07	DRY/REGEN. CYCLE	4 HOURS + 4 HOURS
08	DESIGN PRESSURE	9.7 barg
09	DESIGN TEMP.	250 °C
10	HYDRAULIC TEST PR.	15 barg
11	INLET NOZZLE	40A KS 10K SO. FF.
12	OUTLET NOZZLE	40A KS 10K SO. FF.
13	ELECTRICITY	380V/3Ph/60Hz
14	VESSELS	DUAL/VERTICALLY ELEVATED.
15	DESICCANT	ACTIVATED ALUMINA
16	ACTIVATED ALUMINA	170 kg/2Tower
17	HEATER CAPACITY	4 kW



△										
△										
△										
△										
△										
△										
REV.	DATE	DESCRIPTION	ENG	CHK	APPD	APPD	APPD	APPD	APPD	
2018.12.10		ISSUED FOR PROPOSAL								
PROJECT										
MANUFACTURER										
TITLE										
PEH-200 SYSTEM										
ITEM NO.	PEH-200	DWG NO.								REV.
SCALE	NONE	GSA-PEH-0200-02							△	

380V/3ø/60HZ

R S T

MCCB-01

MCCB-02

MH-01
MAGNETIC
CONTACTOR

U1 V1 W1

4 KW
MAIN HEATER

F1

F2

MCCB-03

R1

PB-01

R2

TR-01
380/220 100[VA]

X3

12

PBL

PUSH BUTTON LAMP

TO : ELECTRICAL WIRING_2

THR-01

#A01

#A02

R2

07

TO : ELECTRICAL WIRING_3

TE-01

CA[K]


#A03

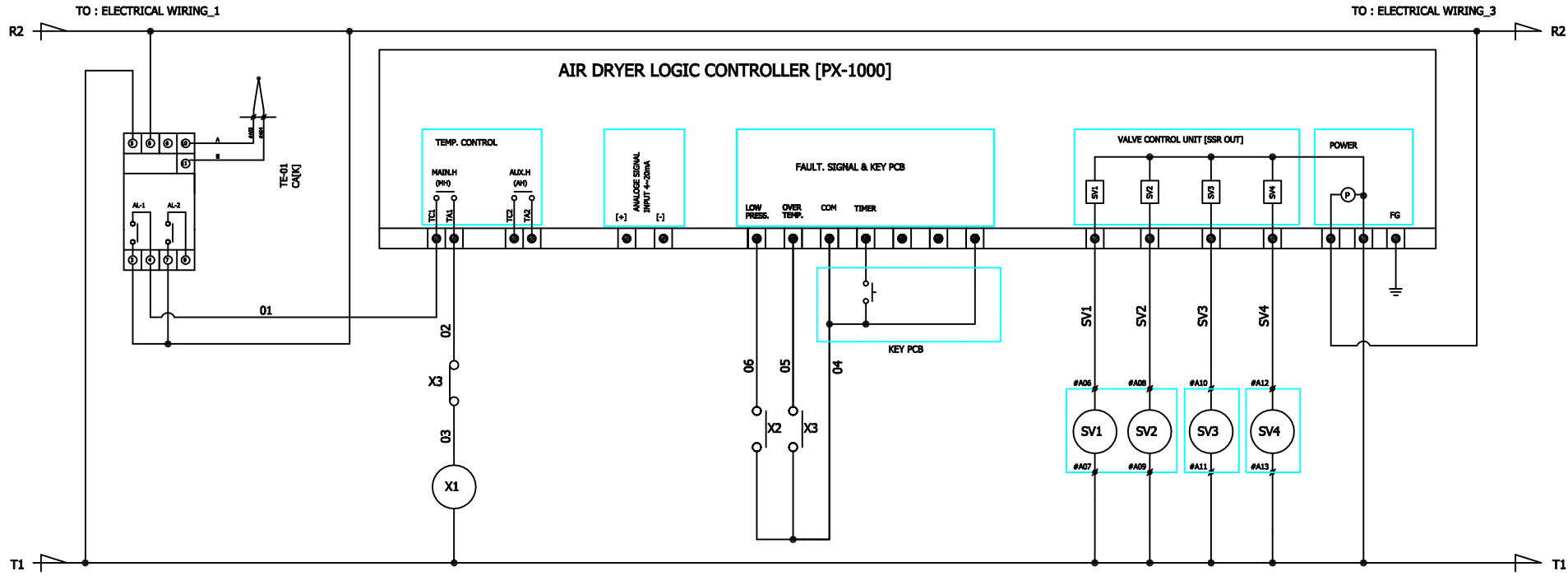
#A04

CA[K]+

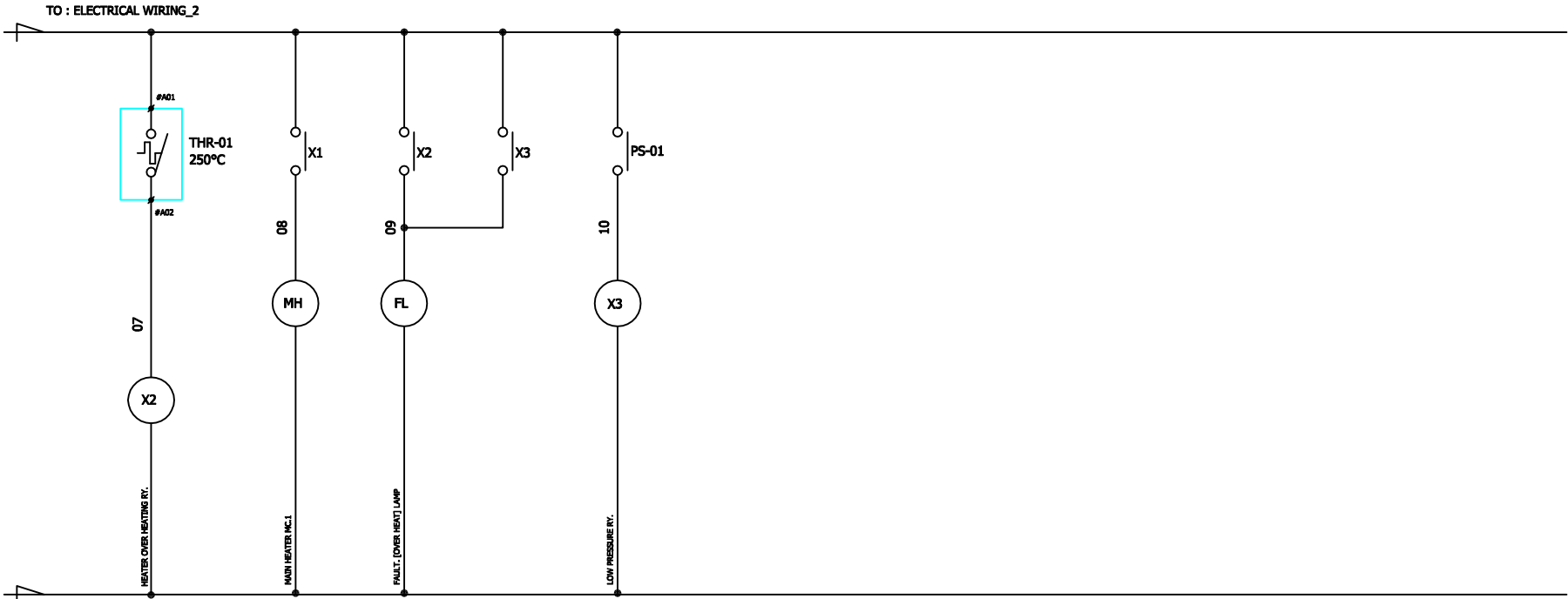
CA[K]-

TO : ELECTRICAL WIRING_2

△									
△									
△									
△									
△	2018.12.10	ISSUED FOR PROPOSAL	-	-	-	-	-	-	-
REV.	DATE	DESCRIPTION	DWG	CHK	APP'D	APP'D	APP'D	APP'D	
PROJECT									
MANUFACTURER									
 Global Standard Air & Gas									
TITLE									
PEH-200 WIRING									
ITEM NO.	PEH-200	DWG NO.							
SCALE	NONE	GSA-PEH-0200-03							
									REV. △



△											
△											
△											
△											
△											
△	2018.12.10	ISSUED FOR PROPOSAL	-	-	-	-	-	-	-		
REV.	DATE	DESCRIPTION	ENGR	CHK	APPD	APPD	APPD	APPD	APPD		
PROJECT											
MANUFACTURER											
TITLE											
PEH-200 WIRING											
ITEM NO.	PEH-200	DWG NO.	GSA-PEH-0200-04							REV.	△
SCALE	NONE										



△										
△										
△										
△										
△	2018.12.10	ISSUED FOR PROPOSAL	-	-	-	-	-	-	-	
REV.	DATE	DESCRIPTION	DWG	CHK	APP'D	APP'D	APP'D	APP'D	APP'D	
PROJECT										
MANUFACTURER										
TITLE										
PEH-200 WIRING										
ITEM NO.	PEH-200	DWG NO.								REV.
SCALE	NONE	GSA-PEH-0200-05							△	