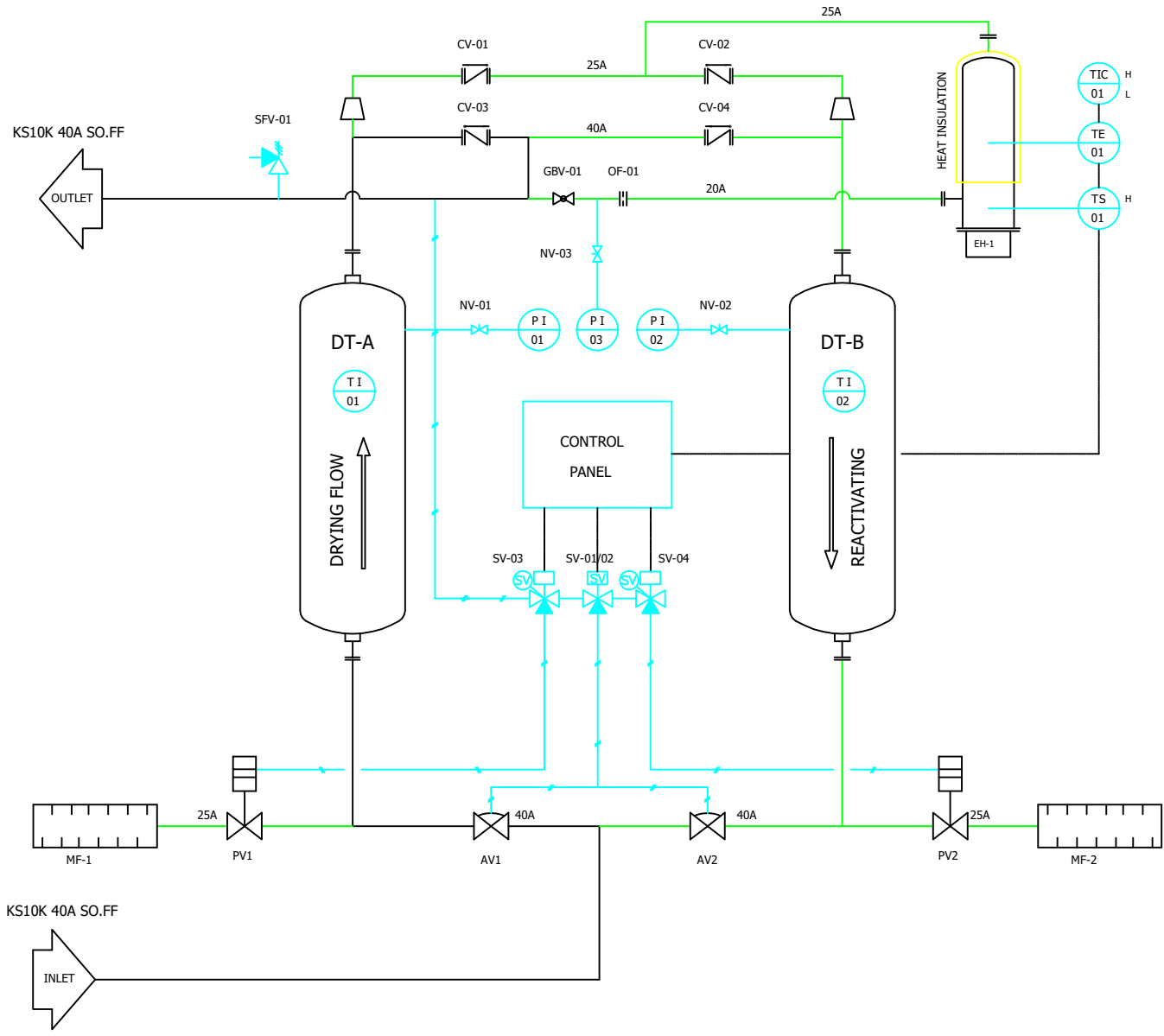
		Desiccant Air Dryer Heater Purge Type		Rev.	Date	Prepared By	Checked By	Approved By
				1	2019.01.15	LEE.S.M.	JO.S.J.	KIM.H.W.
Project No		-		Model Name		PEH-150		
MECHANICAL DESIGN DATA								
2	Supply Voltage	380V		Inlet Flow Rate	250	Nm ³ /h		
3	Phase	3PH		Inlet Pressure	7.0	barg		
4	Frequency	60Hz		Inlet Temp.	38	°C		
5	Control use	220V		Outlet Flow Rate	230	Nm ³ /h		
6	Fulid	Compressed Air		Outlet Pressure	6.8	barg		
7	Location	Indoor		Outlet Temp.	40	°C		
8	Design Code	Maker STD.		Pressure Drop	0.2	bar		
9	Area Class	Non-Hazardous		Outlet Dew Point	-40	°C at ATM		
10	Purge Fulid	Dried Air		Purge Rate	20	Nm ³ /h		
CONSTRUCTION								
12	Dryer Type	Heater		Design Pressure	9.7	barg		
13	Vessels Design Code	KS B 6750-3		Design Temperature	250	°C		
14	Vessels Corrosion Allowance	1	mm	Ambient Temperature	38	°C		
15	Desiccant	Activated Alumina		Drying Time	240	min		
16	Desiccant Quantity	110	kg/2Tower	Reactivation Time	240	min		
17	Noise	85	dBA	- Heating Time	150	min		
18	Inlet Connection	40A	KS 10K SO.FF.	- Cooling Time	87	min		
19	Outlet Connection	40A	KS 10K SO.FF.	- Repressing Time	3	min		
20	Material			Heater Type	Location	External		
21	- Shell / Head	SPP / SS275			Method	Electric.		
22	- Flange / Pipe	SS275 / SPP		Heater Power	Main	2.4	kW	
23	- Heater(Shell/Head)	SPP / SS275			Aux.	-	kW	
24	Dimension (W x L x H)	970 X 900 X 1870	mm	Control Panel Power	50	W		
25	Weight	350	kg	Blower Power	N/A	kW		
26	Color (Munsell)	3.0 BG 7.1/0.2		Power Consumption(Avg.)	1.6	kW		
27	Insulation	NO		Control Unit	Printed Circuit Board (P.C.B)			
28				Enclosure Control Panel	IP23			
INSTRUMENTS-ACESSORIES								
30	Pressure Gauge	YES		Temperature Controller	YES			
31	Temperature Gauge	YES		Pressure Switch	YES			
32	Thermocouple	YES						
33	Pressure Regulator For Control Air	YES						
34	Instrument Air Filter	YES						
35	Orifice	YES						
OPTION ITEM								
37	Touch Screen	NO		Anchor Bolt / Nut	NO			
38	Valve Limit Switch	NO						
39	Dew Point Meter	NO						
40	Local Control Panel Double Door	NO						
41	Thyristor Power Regulator (S.C.R)	NO						
NOTES								
43								
44								
45								
46								

ZO-0510-H3H-VSA (ON DWG)

SYMBOL	DESCRIPTION		REDUCING VALVE		AIR MAIN LINE	DT	DRYER TOWER	NV	NEEDLE VALVE
	BALL VALVE (NOR.OPEN)		SAFETY VALVE		OF	ORIFICE	CV	CHECK VALVE	
	BALL VALVE (NOR.CLOSE)		SOLENOID VALVE 2 WAY		TS	THERMOSTAT	GBV	GLOBE VALVE	
	GLOBE VALVE		SOLENOID VALVE 2 WAY		TI	TEMPERATURE GAUGE	SV	SOLENOID VALVE	SFV
	NEEDLE VALVE		AQUAMATIC VALVE		PI	PRESSURE GAUGE	PV	PURGE VALVE	AV
	CHECK VALVE		AUTO DRAIN TRAP		EH	ELECTRIC HEATER	FRL	AIR UNIT	
	GATE VALVE		LUB. OIL LINE		FV	4-WAY BALL VALVE	MF	SILENCER	

DESIGN DATA		
NO	DESCRIPTIONS	SPECIFICATIONS
01	MODEL NO.	PEH-150
02	APPLICATION FLUID	COMPRESSED AIR
03	FLOW RATE	250 Nm ³ /hr
04	OUTLET DEW POINT	-40 °C @ ATM
05	INLET AIR PRESSURE	7.0 barg
06	INLET AIR TEMP.	38 °C
07	DRY/REGEN. CYCLE	4 HOURS + 4 HOURS
08	DESIGN PRESSURE	9.7 barg
09	DESIGN TEMP.	250 °C
10	HYDRAULIC TEST PR.	15 barg
11	INLET NOZZLE	40A KS 10K SO. FF.
12	OUTLET NOZZLE	40A KS 10K SO. FF.
13	ELECTRICITY	380V/3Ph/60Hz
14	VESSELS	DUAL/VERTICALLY ELEVATED.
15	DESICCANT	ACTIVATED ALUMINA
16	ACTIVATED ALUMINA	110 kg/2Tower
17	HEATER CAPACITY	2.4kW



REV.	NO.	DATE	DESCRIPTION	ENGR	CHK	APP'D	APP'D	APP'D	
△		2018.12.10	ISSUED FOR PROPOSAL						
PROJECT									
MANUFACTURER									
 GSA <small>Global Standard Air & Gas</small>									
TITLE									
PEH-150 SYSTEM									
ITEM NO.	PEH-150	DWG NO.	GSA-PEH-0150-02						REV.
SCALE	NONE								△

380V/3~/60HZ

R S T

MCCB-01

MCCB-02

MH-01
MAGNETIC
CONTACTOR

U1 V1 W1

2.4 KW
MAIN HEATER

THR-01

TE-01
CA[K]

#A01

#A02

#A03

#A04

R2

07

CA[K]+

CA[K]-

TO : ELECTRICAL WIRING_3

TO : ELECTRICAL WIRING_2

MCCB-03

R1

PB-01

R2

X3


12

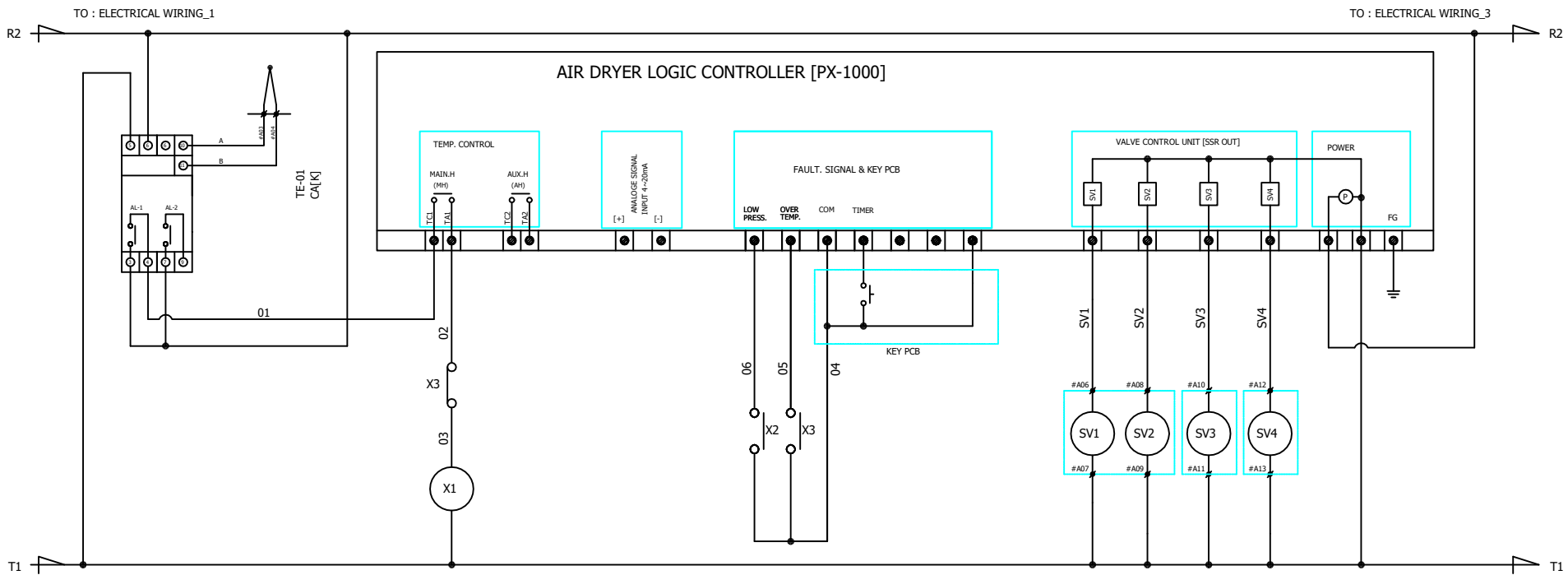
PBL

PUSH BUTTON LAMP

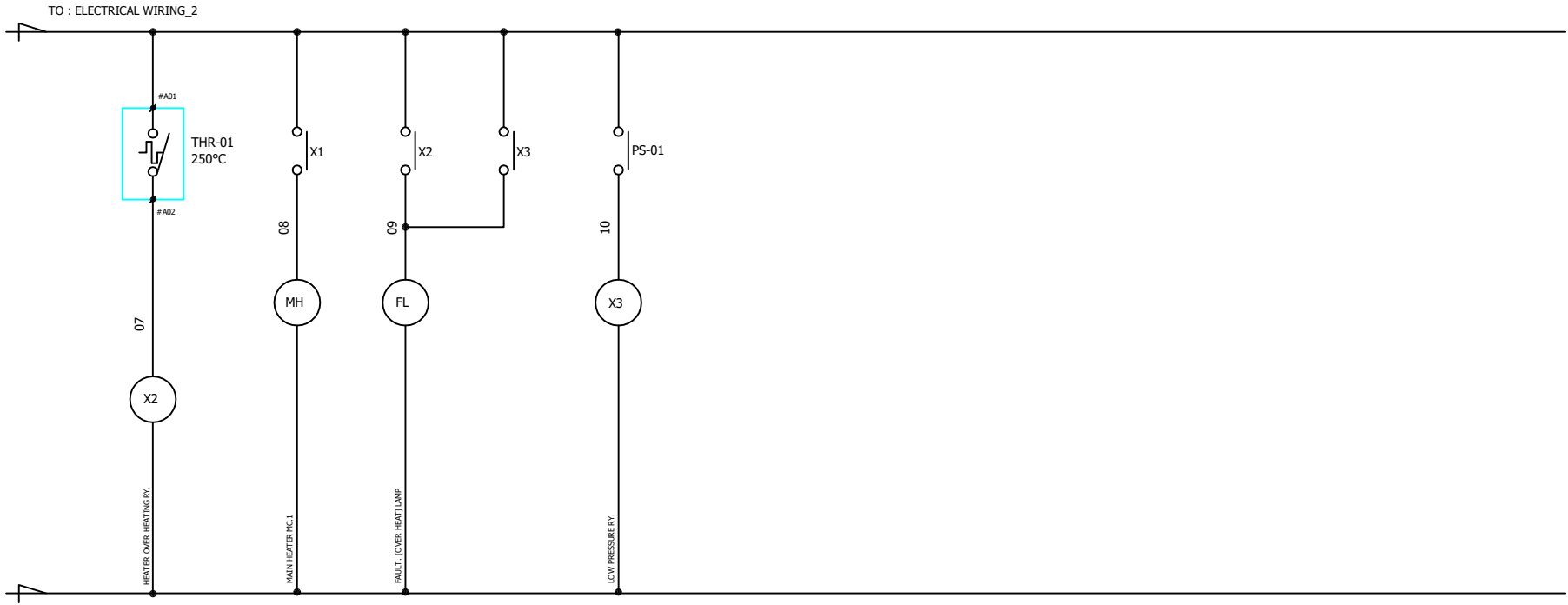
T1

TO : ELECTRICAL WIRING_2

△										
△										
△										
△										
△	2018.12.10	ISSUED FOR PROPOSAL	-	-	-	-	-	-	-	
REV.	DATE	DESCRIPTION	DWG	CHK	APPD	APPD	APPD	APPD		
PROJECT										
MANUFACTURER										
 Global Standard Air & Gas										
TITLE										
PEH-150 WIRING										
ITEM NO.	PEH-150	DWG NO.		GSA-PEH-0150-03						REV.
SCALE	NONE									△



△										
△										
△										
△										
△	2018.12.10	ISSUED FOR PROPOSAL	-	-	-	-	-	-	-	
REV.	DATE	DESCRIPTION	DRWG	CHK	APPD	APPD	APPD	APPD	APPD	
PROJECT										
MANUFACTURER										
TITLE										
PEH-150 WIRING										
ITEM NO.	PEH-150	DRWG NO.	GSA-PEH-0150-04							REV.
SCALE	NONE								△	



△											
△											
△											
△											
△	2018.12.10	ISSUED FOR PROPOSAL	-	-	-	-	-	-	-		
REV.	DATE	DESCRIPTION	DWG	CHK	APPD	APPD	APPD	APPD	APPD		
PROJECT											
MANUFACTURER											
TITLE											
PEH-150 WIRING											
ITEM NO.	PEH-150	DWG NO.	GSA-PEH-0150-05							REV.	△
SCALE	NONE										