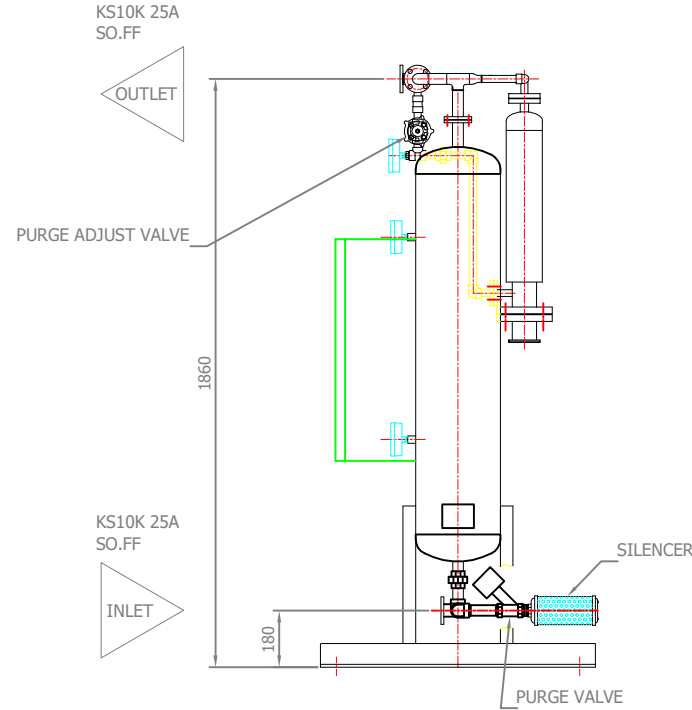
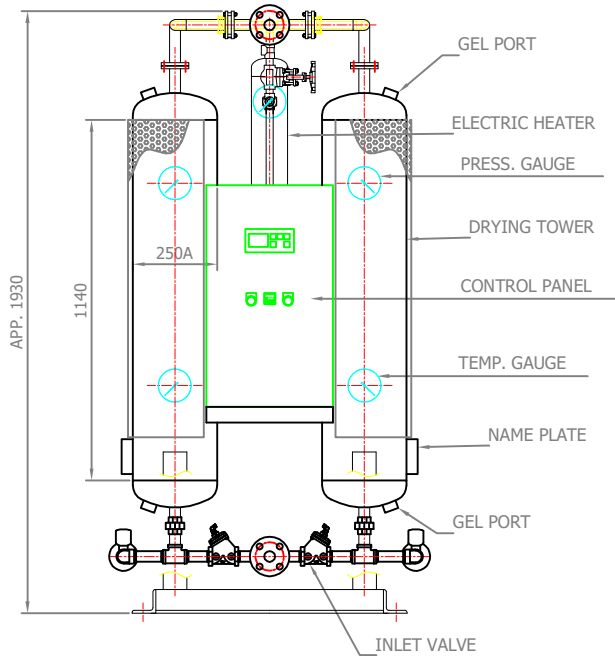
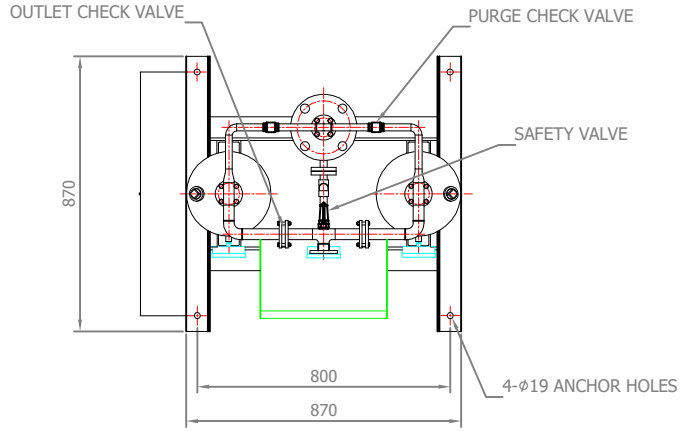
		Desiccant Air Dryer Heater Purge Type		Rev.	Date	Prepared By	Checked By	Approved By
				1	2019.01.15	LEE.S.M.	JO.S.J.	KIM.H.W.
Project No		-		Model Name		PEH-100		
MECHANICAL DESIGN DATA								
2	Supply Voltage	380V		Inlet Flow Rate	150	Nm ³ /h		
3	Phase	3PH		Inlet Pressure	7.0	barg		
4	Frequency	60Hz		Inlet Temp.	38	°C		
5	Control use	220V		Outlet Flow Rate	138	Nm ³ /h		
6	Fulid	Compressed Air		Outlet Pressure	6.8	barg		
7	Location	Indoor		Outlet Temp.	40	°C		
8	Design Code	Maker STD.		Pressure Drop	0.2	bar		
9	Area Class	Non-Hazardous		Outlet Dew Point	-40	°C at ATM		
10	Purge Fulid	Dried Air		Purge Rate	12	Nm ³ /h		
CONSTRUCTION								
12	Dryer Type	Heater		Design Pressure	9.7	barg		
13	Vessels Design Code	KS B 6750-3		Design Temperature	250	°C		
14	Vessels Corrosion Allowance	1	mm	Ambient Temperature	38	°C		
15	Desiccant	Activated Alumina		Drying Time	240	min		
16	Desiccant Quantity	90	kg/2Tower	Reactivation Time	240	min		
17	Noise	85	dBA	- Heating Time	150	min		
18	Inlet Connection	25A	KS 10K SO.FF.	- Cooling Time	87	min		
19	Outlet Connection	25A	KS 10K SO.FF.	- Repressing Time	3	min		
20	Material			Heater Type	Location	External		
21	- Shell / Head	SPP / SS275			Method	Electric.		
22	- Flange / Pipe	SS275 / SPP		Heater Power	Main	2.1	kW	
23	- Heater(Shell/Head)	SPP / SS275			Aux.	-	kW	
24	Dimension (W x L x H)	870 X 870 X 1870	mm	Control Panel Power	50	W		
25	Weight	300	kg	Blower Power	N/A	kW		
26	Color (Munsell)	3.0 BG 7.1/0.2		Power Consumption(Avg.)	1.4	kW		
27	Insulation	NO		Control Unit	Printed Circuit Board (P.C.B)			
28				Enclosure Control Panel	IP23			
INSTRUMENTS-ACESSORIES								
30	Pressure Gauge	YES		Temperature Controller	YES			
31	Temperature Gauge	YES		Pressure Switch	YES			
32	Thermocouple	YES						
33	Pressure Regulator For Control Air	YES						
34	Instrument Air Filter	YES						
35	Orifice	YES						
OPTION ITEM								
37	Touch Screen	NO		Anchor Bolt / Nut	NO			
38	Valve Limit Switch	NO						
39	Dew Point Meter	NO						
40	Local Control Panel Double Door	NO						
41	Thyristor Power Regulator (S.C.R)	NO						
NOTES								
43								
44								
45								
46								



NO	DESCRIPTION	MATL	QTY	SPECIFICATION
1	ELECTRIC HEATER	-	1	2.1 kW
2	INLET VALVE	GCD	2	PT 1"
3	OUTLET CHECK VALVE	BRASS	2	FLANGE 1"
4	PURGE CHECK VALVE	304	2	PT 3/4"
5	PURGE VALVE	304	2	PT 3/4"
6	SILENCER	-	2	PT 3/4"
7	PRESSURE GAUGE	C.S	3	15bar -100
8	TEMPERATURE GAUGE	C.S	2	250°C -100
9	GEL PORT	-	2	PT 1"
10	GEL PORT	-	2	PT 1"
11	SAFETY VALVE	BRASS	1	PT 3/4"
12	NAME PLATE	AL	2	-
13	DRYING TOWER	SPP/SS400	2	-
14	PURGE ADJUST VALVE	A105	1	PT 1/2"
15	A - TOWER INLET VALVE	-	1	-
16	B - TOWER INLET VALVE	-	1	-
17	A - TOWER PURGE VALVE	-	1	-
18	B - TOWER PURGE VALVE	-	1	-
19	CONTROL PANEL	-	1	-

SPECIFICATION		
1	PROCESS	COMPRESSED AIR
2	CAPACITY	150 Nm ³ /hr
3	INLET AIR PRESSURE	7 barg
4	INLET AIR TEMPERATURE	38 °C
5	DESIGN PRESSURE	9.7 barg
6	DEW POINT	-40 °C
7	NORMAL PURGE	12 Nm ³ /hr
8	POWER SUPPLY	380V-3PH-60HZ
9	CONTROL POWER	220V-1PH-60HZ
10	CYCLE TIME	4 + 4 HOURS
11	DESICCANT	90 kg/2TOWERS
12	HEATER	2.1 kW
13	COLOR	3.OBG 7.1/0.2
14	WEIGHT	300 kg

REVISION			
REV.	DESCRIPTION	DATE	DWG. BY

REV.	DATE	DESCRIPTION	ENG.	CHK.	APPD.	APPD.	APPD.
2018.12.10		ISSUED FOR PROPOSAL					

PROJECT: -

MANUFACTURER: **GSA** Global Standard Air & Gas

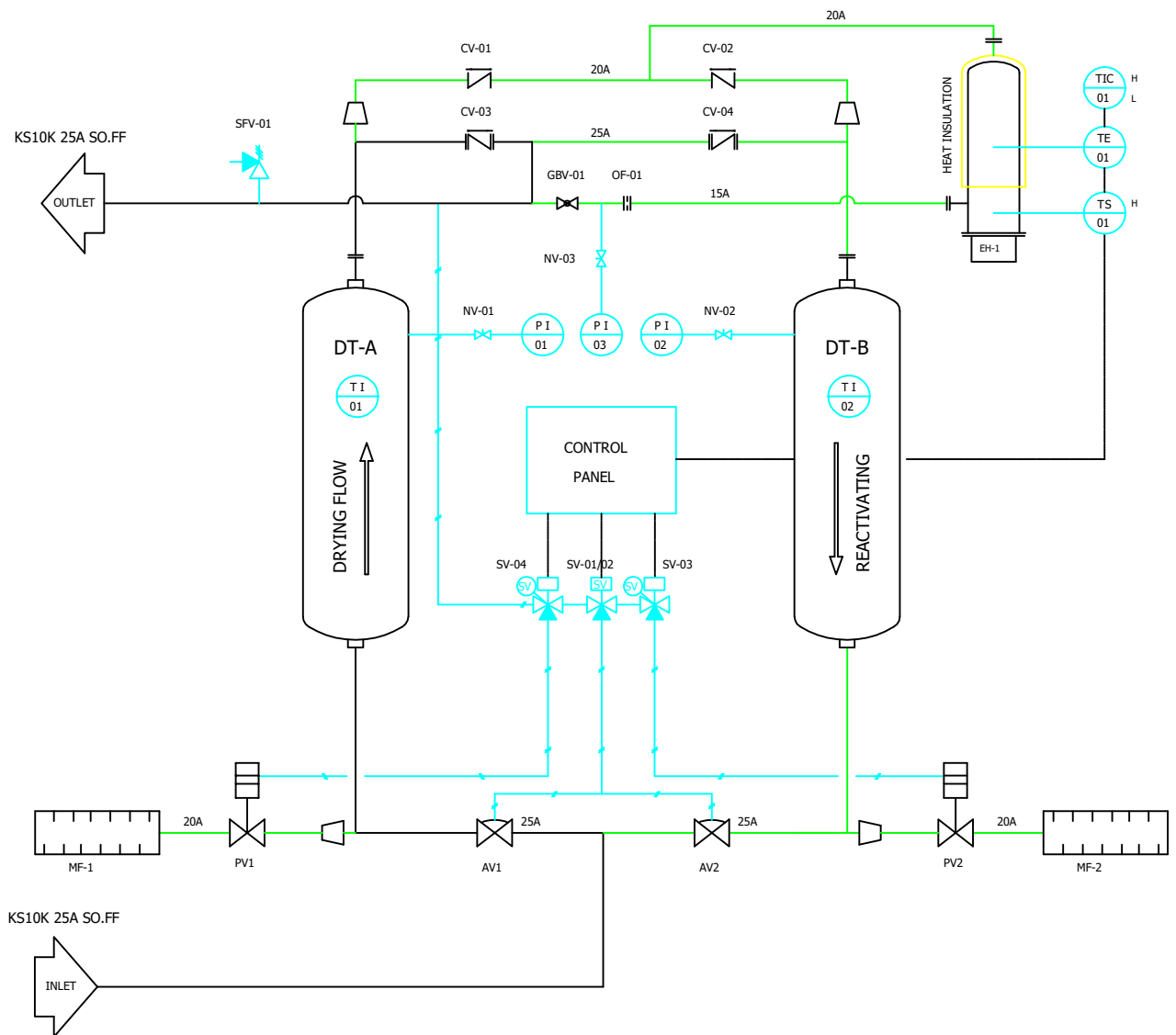
TITLE: PEH-100 OUTLINE

ITEM NO. PEH-100 | DWG NO. GSA-PEH-0100-01 | REV. A

SCALE: NONE

SYMBOL	DESCRIPTION	SYMBOL	DESCRIPTION	SYMBOL	DESCRIPTION	SYMBOL	DESCRIPTION	SYMBOL	DESCRIPTION
	BALL VALVE (NOR.OPEN)		REDUCING VALVE		AIR MAIN LINE		DRYER TOWER		NEEDLE VALVE
	BALL VALVE (NOR.CLOSE)		SAFETY VALVE		INSTRUMENT AIR LINE		ORIFICE		CHECK VALVE
	GLOBE VALVE		SOLENOID VALVE 2 WAY		ELECTRIC LINE		THERMOSTAT		GLOBE VALVE
	NEEDLE VALVE		SOLENOID VALVE 2 WAY		TEMPERATURE GAUGE		SOLENOID VALVE		SAFETY VALVE
	CHECK VALVE		AQUAMATIC VALVE		PRESSURE GAUGE		PURGE VALVE		AQUAMATIC VALVE
	GATE VALVE		AUTO DRAIN TRAP		ELECTRIC HEATER		AIR UNIT		DEW POINT METER
			LUB. OIL LINE		4-WAY BALL VALVE		SILENCER		

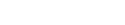
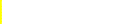
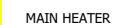
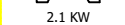
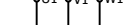
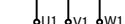
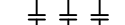
DESIGN DATA		
NO	DESCRIPTIONS	SPECIFICATIONS
01	MODEL NO.	PEH-100
02	APPLICATION FLUID	COMPRESSED AIR
03	FLOW RATE	150 Nm ³ /hr
04	OUTLET DEW POINT	-40 °C @ ATM
05	INLET AIR PRESSURE	7.0 barg
06	INLET AIR TEMP.	38 °C
07	DRY/REGEN. CYCLE	4 HOURS + 4 HOURS
08	DESIGN PRESSURE	9.7 barg
09	DESIGN TEMP.	250 °C
10	HYDRAULIC TEST PR.	15 barg
11	INLET NOZZLE	25A KS 10K SO. FF.
12	OUTLET NOZZLE	25A KS 10K SO. FF.
13	ELECTRICITY	380V/3Ph/60Hz
14	VESSELS	DUAL/VERTICALLY ELEVATED.
15	DESICCANT	ACTIVATED ALUMINA
16	ACTIVATED ALUMINA	90 kg/2Tower
17	HEATER CAPACITY	2.1 kW



△										
△										
△										
△										
△										
△	2018.12.10	ISSUED FOR PROPOSAL								
REV. NO.	DATE	DESCRIPTION	ENGR	CHK	APPD	APPD	APPD	APPD		
PROJECT										
MANUFACTURER										
TITLE										
PEH-100 SYSTEM										
ITEM NO.	PEH-100	DWG NO.	GSA-PEH-0100-02							REV.
SCALE	NONE									△

380V/3/60HZ

R S T



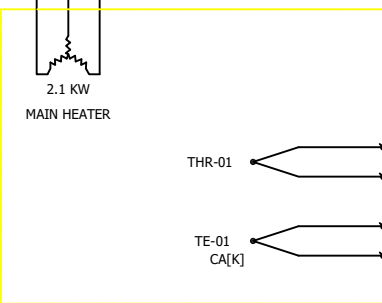
MCCB-01

MCCB-02

MH-01
MAGNETIC
CONTACTOR

U1 V1 W1

2.1 KW
MAIN HEATER



THR-01

TE-01
CA[K]

#A01

#A02

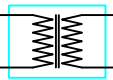
#A03

#A04

MCCB-03

F1

F2



TR-01
380/220 100[VA]

R1

PB-01

X3

12



PUSH BUTTON LAMP


R2

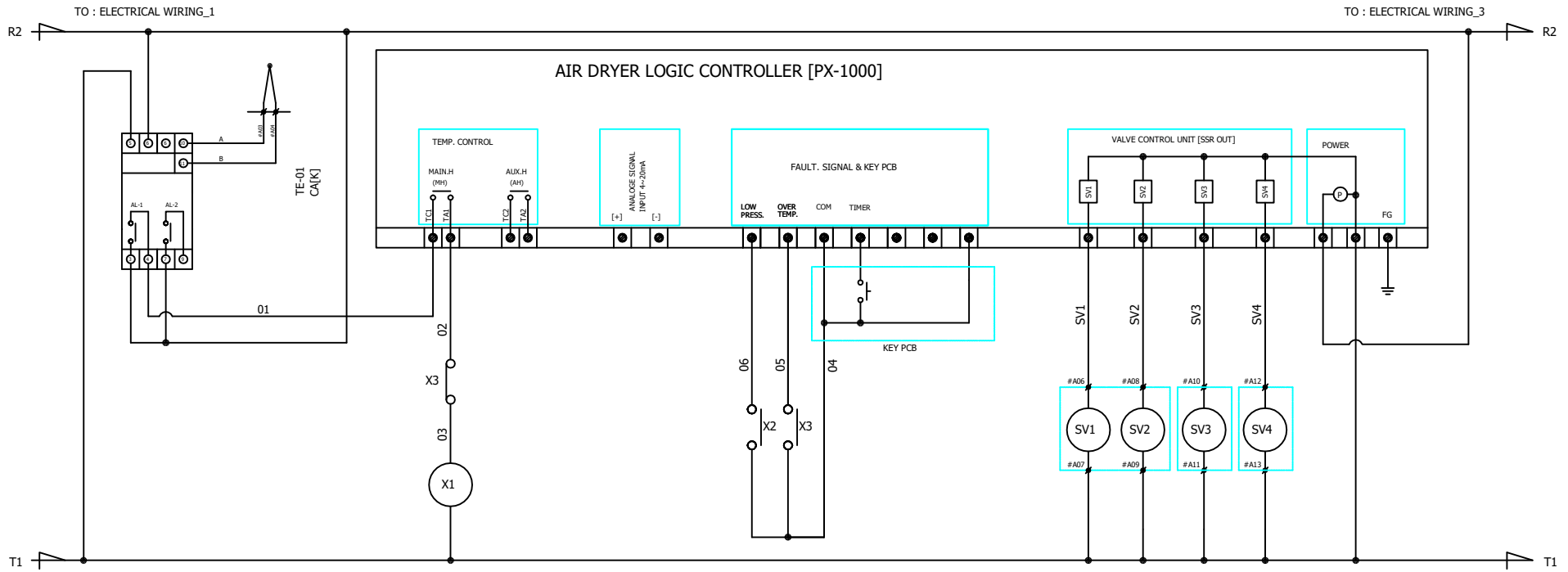
T1

TO : ELECTRICAL WIRING_2

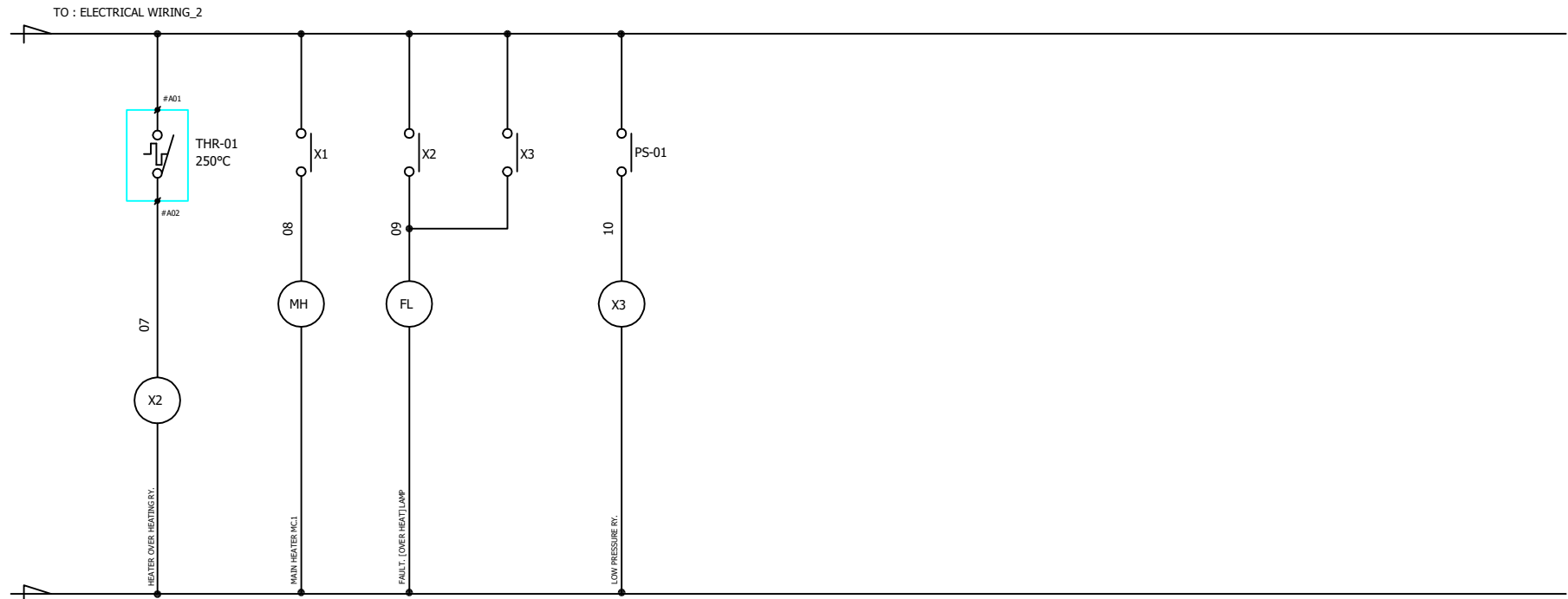
TO : ELECTRICAL WIRING_3

TO : ELECTRICAL WIRING_2

△										
△										
△										
△										
△										
△	2018.12.10	ISSUED FOR PROPOSAL	-	-	-	-	-	-	-	
REV.	DATE	DESCRIPTION	DWG	CHK	APPD	APPD	APPD	APPD		
PROJECT										
MANUFACTURER										
 Global Standard Air & Gas										
TITLE										
PEH-100 WIRING										
ITEM NO.	PEH-100	DWG NO.								REV.
SCALE	NONE	GSA-PEH-0100-03							△	



△										
△										
△										
△										
△										
△	2018.12.10	ISSUED FOR PROPOSAL	-	-	-	-	-	-	-	
REV.	DATE	DESCRIPTION	DRWG	CHK	APPD	APPD	APPD	APPD	APPD	
PROJECT										
MANUFACTURER										
TITLE										
PEH-100 WIRING										
ITEM NO.	PEH-100	DRWG NO.								REV.
SCALE	NONE	GSA-PEH-0100-04							△	



△									
△									
△									
△									
△									
△	2018.12.10	ISSUED FOR PROPOSAL	-	-	-	-	-	-	-
REV.	DATE	DESCRIPTION	DWG	CHK	APP'D	APP'D	APP'D	APP'D	
PROJECT									
MANUFACTURER									
TITLE									
PEH-100 WIRING									
ITEM NO.	PEH-100	DWG NO.		GSA-PEH-0100-05			REV.		△
SCALE	NONE								