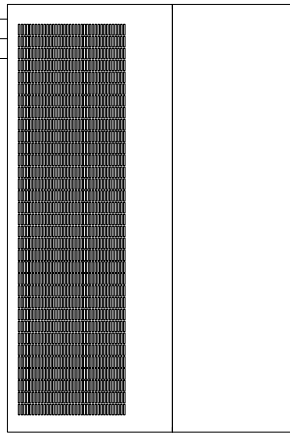
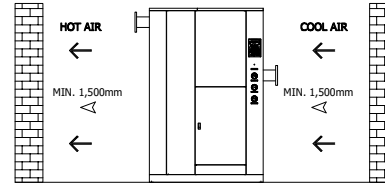
	Refrigerated Air Dryer		Rev.	Date	Prepared By	Checked By	Approved By
			A	2019.01.15	LEE.S.M.	JO.S.J.	KIM.H.W.
	Air Cooled Type		B				
			C				
			D				
Project Name		-		Model Name		HYD-600N	
SPECIFICATION							
1							
2	Supply Voltage	380V		Inlet Flow Rate	85		Nm3/min
3	Phase	3PH		Inlet Pressure	7		barg
4	Frequency	60Hz		Inlet Temp.	38		°C
5	Control use	220V		Outlet Flow Rate	85		Nm3/min
6	Fulid	Compressed Air		Outlet Pressure	6.8		barg
7	Location	Indoor		Outlet Temp.	28±5		°C
8	Design Code	Maker STD.		Pressure Drop	0.2		bar
9	Area Class	Non-Hazardous		Outlet Dew Point	2~10		°C
10				Design Pressure	9.7		barg
11				Design Temperature	70		°C
12				Ambient Temperature	32		°C
CONSTRUCTION							
13							
14	Refrigerant	R-22		Dimension (W x L x H)	1200 X 1800 X 1825		mm
15	Ref. Compressor Type	Scroll		Weight	1,100		kg
16	Ref. Compressor Capacity	13 HP		Power Consumption	12.7		kW
17	Condenser Type	Air Cooled		Inlet Connection	150A		KS 10K SO.FF.
18	Condenser Fan Motor	0.4 kW		Outlet Connection	150A		KS 10K SO.FF.
19		2 EA		Drain Connection	15A		PT Female Screw
20	Condenser Fan Size	600 mm		Color (Munsell)	5.7PB 4.1/9.9		
21	Condenser Capacity	15 HP			5.7PB 2.9/3.5		
22	Condenser Material	Aluminum & Copper					
23	Heat Exchanger Type	Block					
24	Heat Exchanger Material	Aluminum					
25	Ref. Control Device	TEV					
26	Temp. Control Device	Hot Gas Bypass Valve					
27	Drain Trap Type	Level Sensor					
STANDRAD FEATURES AND CONTROL							
28							
29	Ref. Pressure Transmitter	YES		Ref. Compressor			YES
30	Ref. Liquid Filter Dryer	YES		Expansion Valve			YES
31	Overload Relay	YES		Hot Gas Bypass Valve			YES
32	PCB Controller	YES		Air Cooled Condenser			YES
33	4.3" TFT LCD	YES		Accumulator with Heat Exchanger			YES
34	Air Pressure Gauge	YES		Liquid Ref. Receiver			NO
35	Ref. Pressure Gauge	YES		Oil Separator			YES
36	Dual Pressure Switch	NO		Circuit Breaker			YES
37	Moisture Indicator	YES		Ref. Compressor Heater			YES
38	Drain	YES					
NOTES							
39							
40							
41							
42							
43							
44							
45							
46							

AIR INLET
150A KS 10K SO.FF.

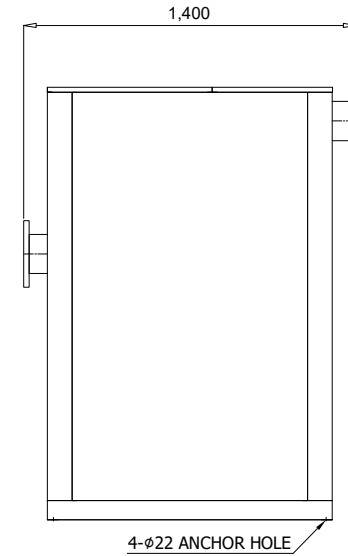
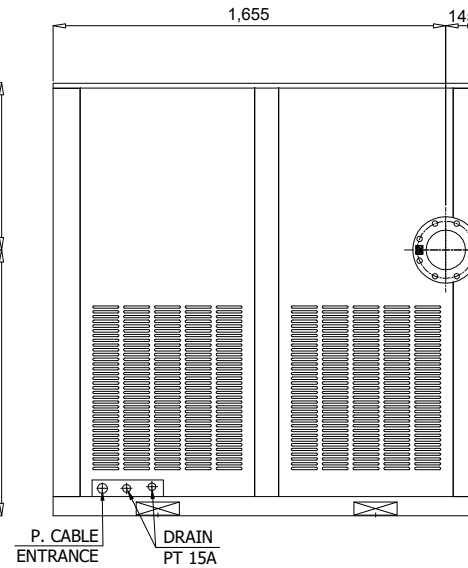
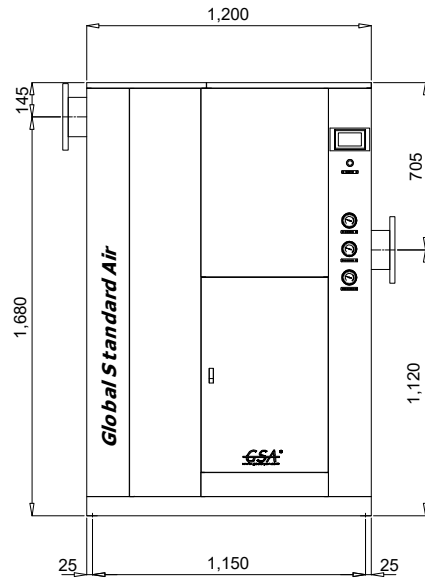
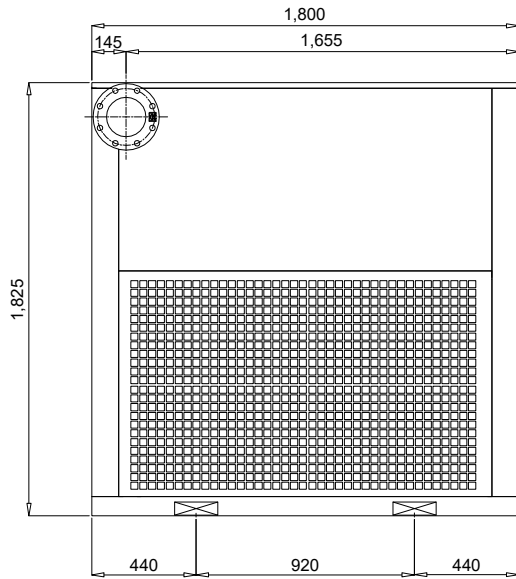
AIR OUTLET
150A KS 10K SO.FF.




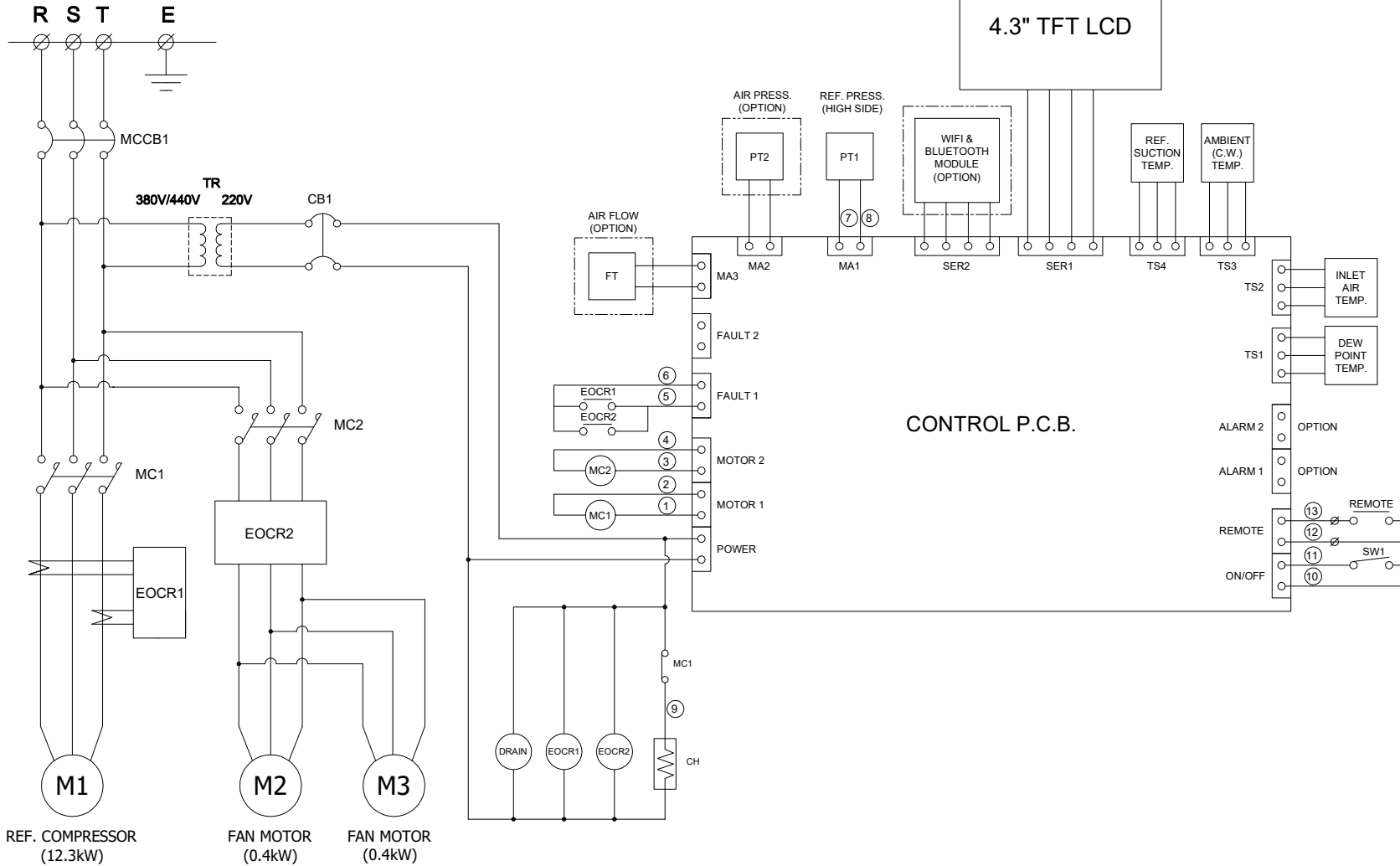
COOLING AIR DIRECTION



SPECIFICATION	
INLET AIR TEMPERATURE	38°C
AMBIENT TEMPERATURE	32°C
INLET AIR PRESSURE	7 barg
CAPACITY	85.0 Nm ³ /min
IN/OUT CONNECTION	150A KS 10K SO.FF.
DIMENSION(WXDXH, mm)	1,200 X 1,800 X 1,830
WEIGHT	1,100 kg
POWER CONSUMPTION	13.1 kW
POWER SUPPLY	380/440V - 3PH - 50/60HZ



△										
△										
△										
△										
△										
△	2018. 11. 26.	ISSUED FOR REFERENCE								
REV. NO.	DATE	DESCRIPTION	DWG	CHK	APPD	APPD	APPD			
PROJECT										
MANUFACTURER										
										
TITLE										
OUTLINE DRAWING										
ITEM NO.	HYD-600N	DWG NO.	GSA-HYD-0600N-01							REV.
SCALE	NONE									△



NO.	SYMBOL	DESCRIPTION
		POWER SOURCE AC 380/440V, 3Ph, 50/60Hz
12	MA1 ~ MA3	PRESSURE & FLOW SENSOR
11	DRAIN	AUTO DRAIN VALVE
10	SW1	SYSTEM ON/OFF SWITCH
9	C.H.	REF. COMP. HEATER
8	DRAIN	AUTO DRAIN VALVE
7	TS1 ~ TS4	TEMP. SENSOR
6	CB1	CIRCUIT BREAKER(CTRL)
5	MCCB1	CIRCUIT BREAKER(MAIN)
4	MC1, MC2	MAGNETIC CONTACTOR
3	EOCR1, EOCR2	OVERLOAD RELAY
2	M2, M3	FAN MOTOR
1	M1	REF. COMPRESSOR

***REVERSE PHASE WARNING**
 Be sure to check the rotation direction of the fan motor and the operating condition of the refrigerant compressor.
 - The fan motor must rotate clockwise.
 - When the refrigerant compressor is operating, the refrigerant suction pressure will be lowered.
 When operating in reverse phase, the refrigerant compressor is damaged.
 In case of reverse phase, change the position of 2 wires out of 3 wires of the power supply line.
 Problems caused by incorrect power connection are not guaranteed.

△									
△									
△									
△									
△									
△	2018. 11. 26.	ISSUED FOR REFERENCE							
REV.	NO.	DATE	DESCRIPTION	DWG	CHK	APPD	APPD	APPD	
PROJECT									

MANUFACTURER

GSA
Global Service Air & Gas

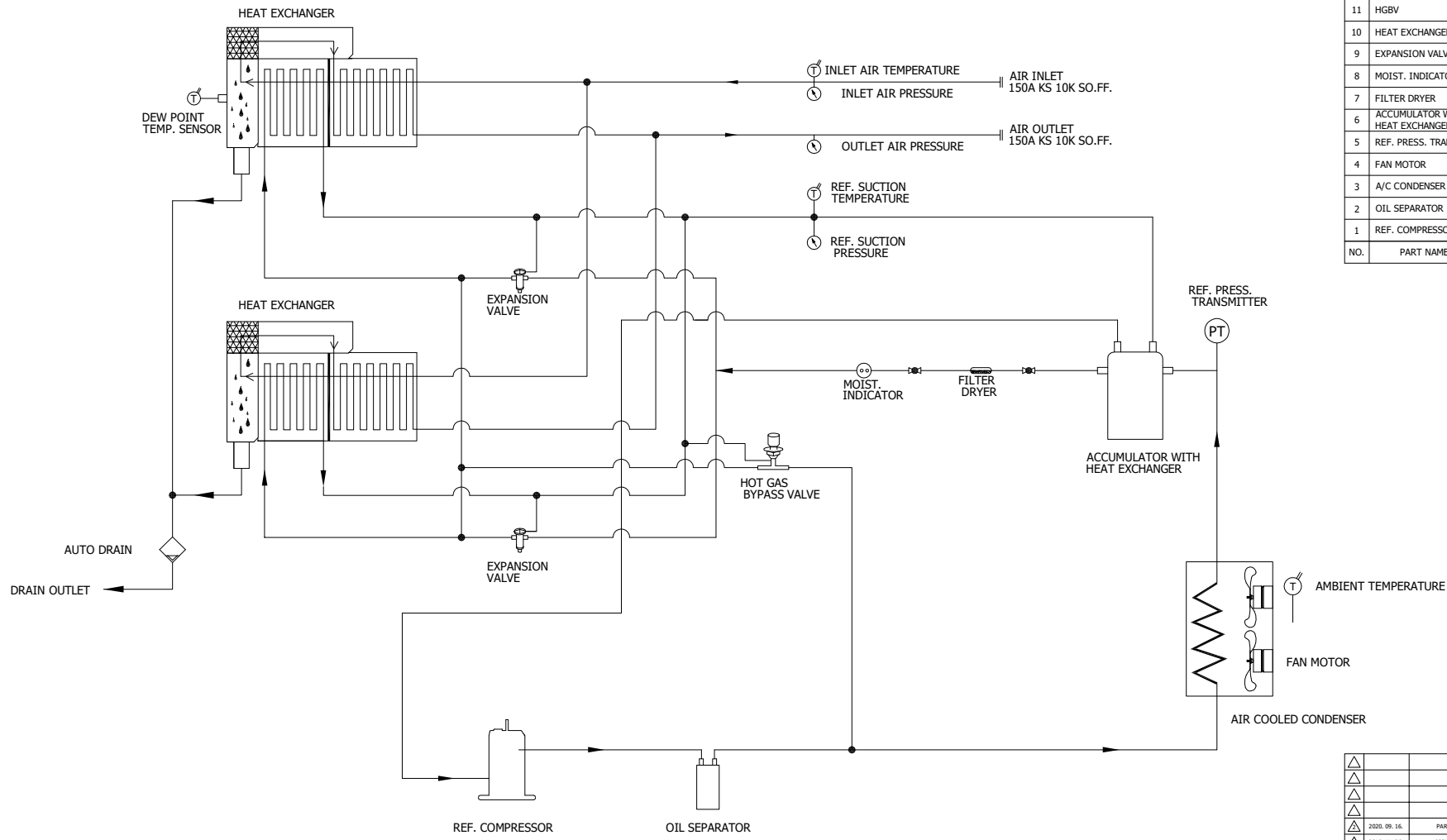
TITLE

WIRING DRAWING

ITEM NO.	HYD-600N	DWG NO.	GSA-HYD-0600N-03	REV.	△
SCALE	NONE				


(A4 : 297mm x 210mm)

DEW POINT	2~10°C @ PDP		
INLET AIR PRESSURE	7.0 BARG		
INLET AIR TEMPERATURE	38°C		
CAPACITY	85.0 Nm ³ /min		
15	PRESS. GAUGE	OUTLET AIR	1
14	PRESS. GAUGE	INLET AIR	1
13	PRESS. GAUGE	REF. SUCTION	1
12	AUTO DRAIN	PT 15A	1
11	HGBV	-	1
10	HEAT EXCHANGER	300 HP	2
9	EXPANSION VALVE	7.5 TON	2
8	MOIST. INDICATOR	5/8"	1
7	FILTER DRYER	5/8"	1
6	ACCUMULATOR WITH HEAT EXCHANGER	-	1
5	REF. PRESS. TRANSMIT.	-1 ~ 35 BAR	1
4	FAN MOTOR	0.4KW 6P ø600	2
3	A/C CONDENSER	15 HP (CONDENSING CAPACITY)	1
2	OIL SEPARATOR	-	1
1	REF. COMPRESSOR	13 HP (COOLING CAPACITY)	1
NO.	PART NAME	DESCRIPTION	QTY



AUTO DRAIN
DRAIN OUTLET

← AIR INLET LINE
→ AIR OUTLET LINE
← REF. LOW PRESS. LINE
→ REF. HIGH PRESS. LINE

△										
△										
△										
△										
△	2020. 09. 16.	PARTS NUMBER DELETE								
△	2018. 11. 26.	ISSUED FOR REFERENCE								
REV. NO.	DATE	DESCRIPTION	ENG	CHK	APPD	APPD	APPD			
PROJECT										
MANUFACTURER										
										
TITLE										
PIPING & INSTRUMENTATION DRAWING										
ITEM NO.	HYD-600N	DWG NO.	GSA-HYD-0600N-02				REV.	△		
SCALE	NONE									