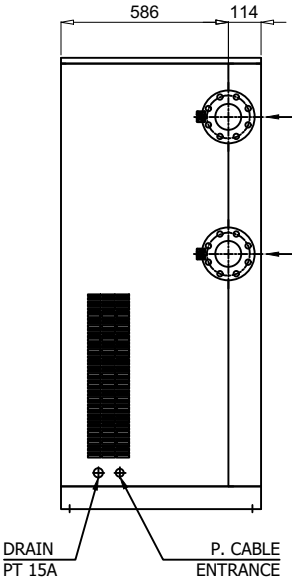
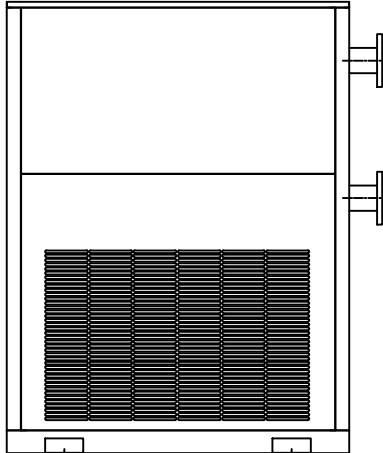
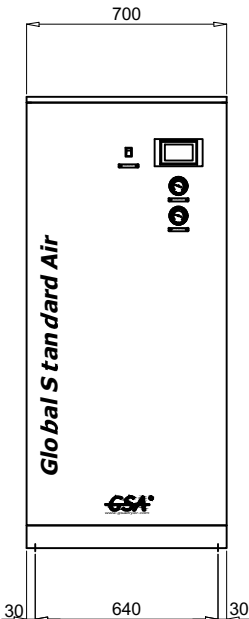
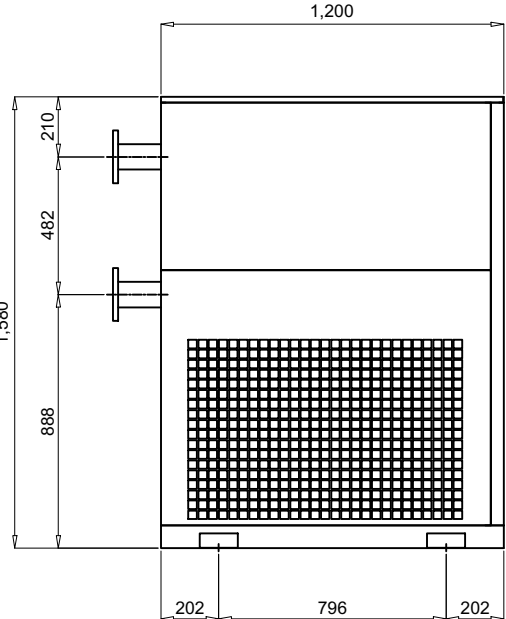
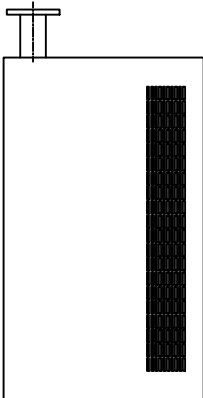
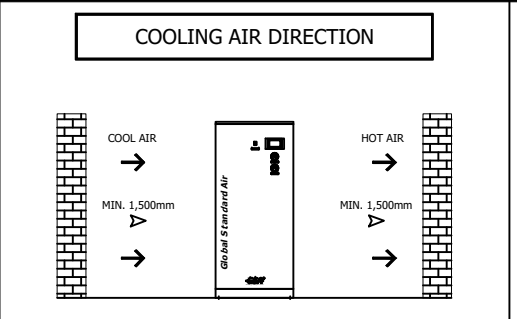
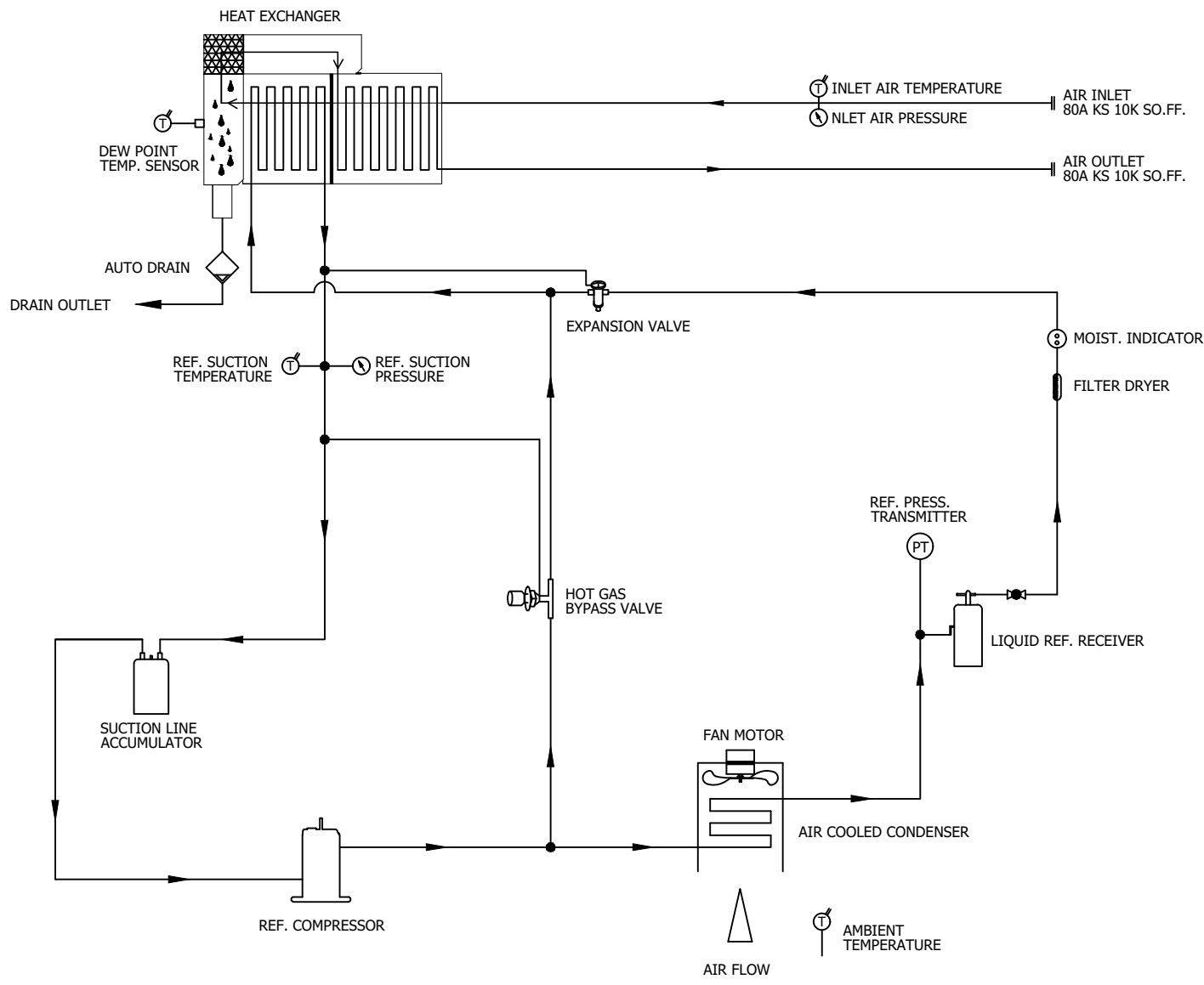
	Refrigerated Air Dryer for High Temp.	Rev.	Date	Prepared By	Checked By	Approved By
		1	2020.09.18	WOO.I.H.	JO.S.J.	KIM.H.W.
	Air Cooled Type	2				
		3				
4						
Project Name		-		Model Name		HYD-200HT
SPECIFICATION						
2	Supply Voltage	380V	Inlet Flow Rate	30	Nm ³ /min	
3	Phase	3PH	Inlet Pressure	7	barg	
4	Frequency	60Hz	Inlet Temp.	45	°C	
5	Control use	220V	Outlet Flow Rate	30	Nm ³ /min	
6	Fulid	Compressed Air	Outlet Pressure	6.8	barg	
7	Location	Indoor	Outlet Temp.	33±5	°C	
8	Design Code	Maker STD.	Pressure Drop	0.2	bar	
9	Area Class	Non-Hazardous	Outlet Dew Point	2~10	°C	
10			Design Pressure	14	barg	
11			Design Temperature	70	°C	
12			Ambient Temperature	32	°C	
CONSTRUCTION						
14	Refrigerant	R-22	Dimension (W x D x H)	700 X 1,200 X 1,580	mm	
15	Ref. Compressor Type	Scroll	Weight	260	kg	
16	Ref. Compressor Capacity	5 HP	Power Consumption	4.6	kW	
17	Condenser Type	Air Cooled	Inlet Connection	80A	KS 10K SO.FF.	
18	Condenser Fan Motor	0.4 kW	Outlet Connection	80A	KS 10K SO.FF.	
19		1 EA	Drain Connection	15A	PT Female Screw	
20	Condenser Fan Size	600 mm	Color (Munsell)	5.7PB 4.1/9.9		
21	Condenser Capacity	5 HP		5.7PB 2.9/3.5		
22	Condenser Material	Aluminum & Copper				
23	Heat Exchanger Type	Block				
24	Heat Exchanger Material	Aluminum				
25	Ref. Control Device	TEV				
26	Temp. Control Device	Hot Gas Bypass Valve				
27	Drain Trap Type	Level Sensor				
STANDRAD FEATURES AND CONTROL						
29	Ref. Press. Transmitter	YES	Ref. Compressor	YES		
30	Ref. Liquid Filter Dryer	YES	Expansion Valve	YES		
31	Overload Relay	YES	Hot Gas Bypass Valve	YES		
32	PCB Controller	YES	Air Cooled Condenser	YES		
33	4.3" TFT LCD	YES	Accumulator	YES		
34	Air Pressure Gauge	YES	Liquid Ref. Receiver	YES		
35	Ref. Pressure Gauge	YES	Oil Separator	NO		
36	Dryer Start/Stop Switch	YES	Circuit Breaker(Control)	YES		
37	Moisture Indicator	YES	Ref. Compressor Heater	YES		
38	Drain	YES				
NOTES						
40						
41						
42						
43						
44						
45						
46						

SPECIFICATION	
INLET AIR TEMPERATURE	45°C
AMBIENT TEMPERATURE	32°C
INLET AIR PRESSURE	7 barg
CAPACITY	30 Nm ³ /min
IN/OUT CONNECTION	80A KS 10K SO.FF.
DIMENSION(WXDXH, mm)	700 X 1,200 X 1,580
WEIGHT	260 kg
POWER CONSUMPTION	4.6 kW
POWER SUPPLY	380/440V - 3PH - 50/60Hz




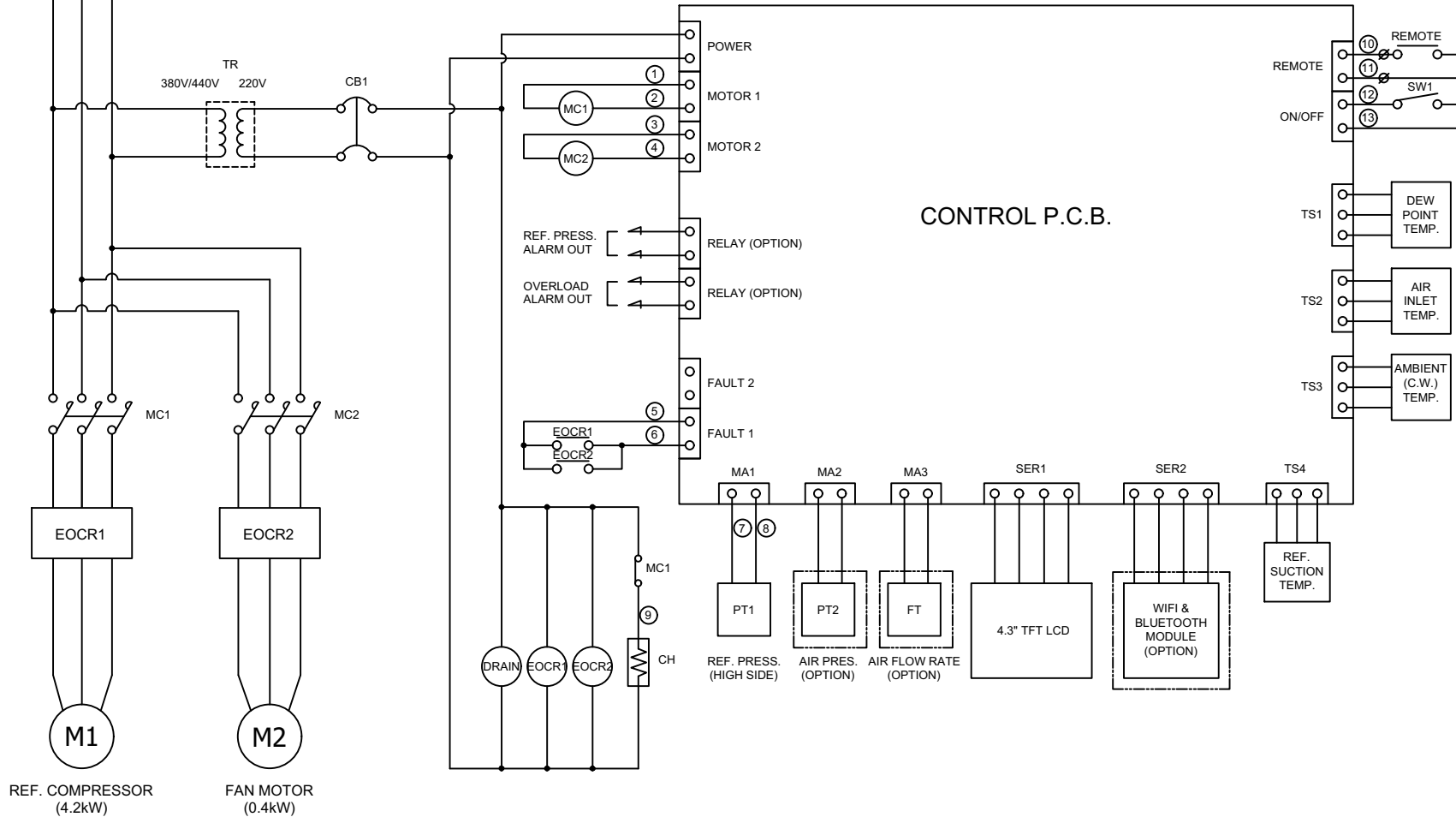
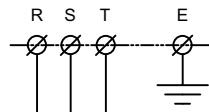
△										
△										
△										
△										
△										
△	2020.09.18.	ISSUED FOR REFERENCE								
REV. NO.	DATE	DESCRIPTION	DWG	CHK	APPD	APPD	APPD	APPD	APPD	
PROJECT										
MANUFACTURER										
TITLE										
OUTLINE DRAWING										
ITEM NO.	HYD-200HT	DWG NO.	GSA-HYD-0200HT-01							REV.
SCALE	NONE								△	



← AIR INLET LINE
 → AIR OUTLET LINE
 ← REF. LOW PRESS. LINE
 → REF. HIGH PRESS. LINE

DEW POINT	2~10°C @ PDP		
INLET AIR PRESSURE	7.0 barg		
INLET AIR TEMPERATURE	45°C		
CAPACITY	30.0 Nm ³ /min		
14	PRESS. GAUGE	INLET AIR	1
13	PRESS. GAUGE	REF. SUCTION	1
12	AUTO DRAIN	PT 15A	1
11	HGBV	-	1
10	ACCUMULATOR	-	1
9	HEAT EXCHANGER	200 HP	1
8	EXPANSION VALVE	5 TON	1
7	MOIST. INDICATOR	1/2"	1
6	FILTER DRYER	1/2"	1
5	REF. RECEIVER	-	1
4	REF. PRESS. TRANSMIT.	-1 ~ 35 BAR	1
3	FAN MOTOR	0.4KW 6P φ600	1
2	A/C CONDENSER	5 HP (CONDENSING CAPACITY)	1
1	REF. COMPRESSOR	5 HP (COOLING CAPACITY)	1
NO.	PART NAME	DESCRIPTION	QTY

△										
△										
△										
△										
△										
REV. NO.	DATE	DESCRIPTION	DWG	CHK	APPD	APPD	APPD	APPD	APPD	
2020. 09. 18.		ISSUED FOR REFERENCE								
PROJECT										
MANUFACTURER										
 <small>Global Service Air & Gas</small>										
TITLE										
PIPING & INSTRUMENTATION DRAWING										
ITEM NO.	HYD-200HT	DWG NO.	GSA-HYD-0200HT-02				REV.	△		
SCALE	NONE									



NO.	SYMBOL	DESCRIPTION
11	PT1	REF. PRESSURE TRANSMITTER
10	TR	TRANSFORMER
9	SW1	SYSTEM ON/OFF SWITCH
8	CH	REF. COMP. HEATER
7	DRAIN	AUTO DRAIN VALVE
6	TS1 ~ TS4	TEMP. SENSOR
5	CB1	CIRCUIT BREAKER(CTRL)
4	MC1, MC2	MAGNETIC CONTACTOR
3	EOCR1, EOCR2	OVERLOAD RELAY
2	M2	FAN MOTOR
1	M1	REF. COMPRESSOR

***REVERSE PHASE WARNING**

Be sure to check the rotation direction of the fan motor and the operating condition of the refrigerant compressor.

- The fan motor must rotate clockwise.
- When the refrigerant compressor is operating, the refrigerant suction pressure will be lowered.

When operating in reverse phase, the refrigerant compressor is damaged.

In case of reverse phase, change the position of 2 wires out of 3 wires of the power supply line.

Problems caused by incorrect power connection are not guaranteed.

REV. NO.	DATE	DESCRIPTION	ENG	CHK	APPD	APPD
2020.09.18.		ISSUED FOR REFERENCE				

MANUFACTURER: **GSA**
Global Service Automation

TITLE: **WIRING DRAWING**

ITEM NO.	HYD-200HT	DWG NO.	GSA-HYD-0200HT-03	REV.	△
SCALE	NONE				