



Refrigerated Air Dryer

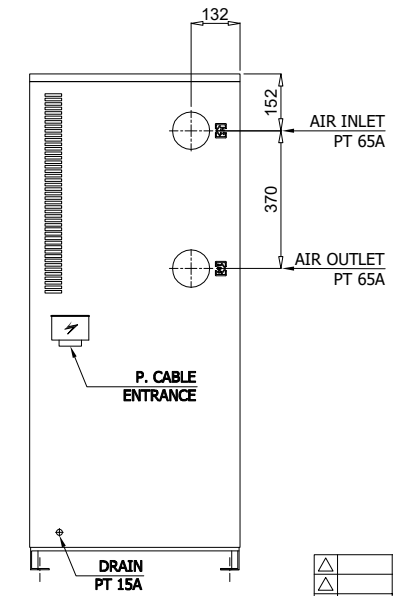
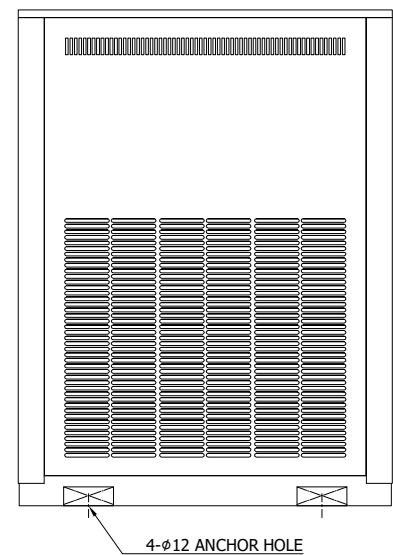
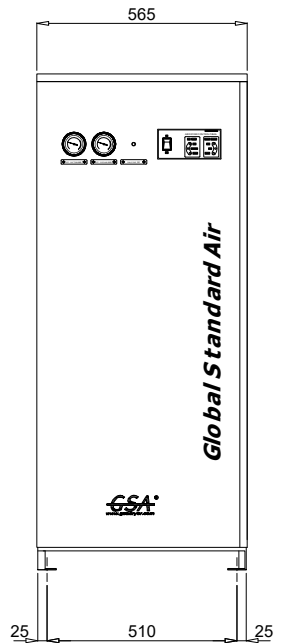
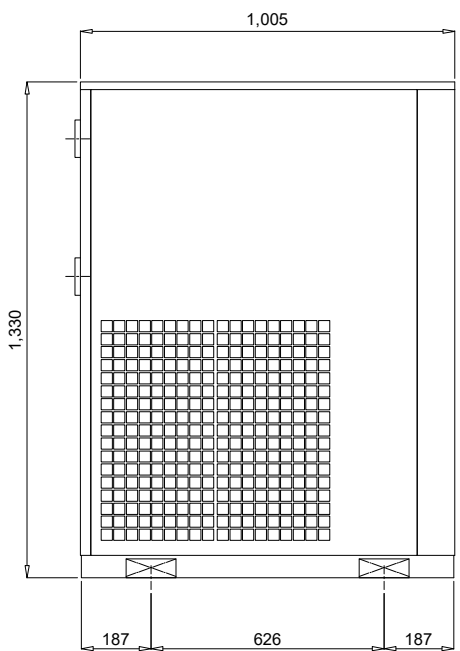
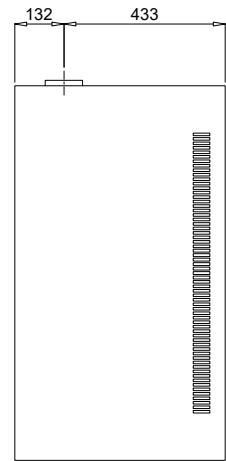
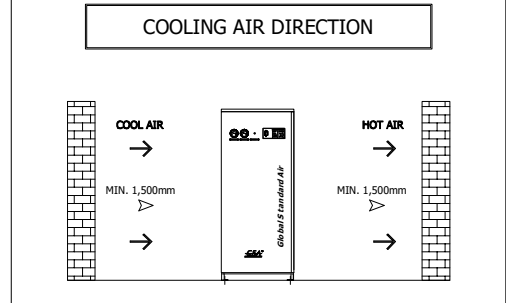
Air Cooled Type

Rev.	Date	Prepared By	Checked By	Approved By
A	2019.01.15	LEE.S.M.	JO.S.J.	KIM.H.W.
B				
C				
D				

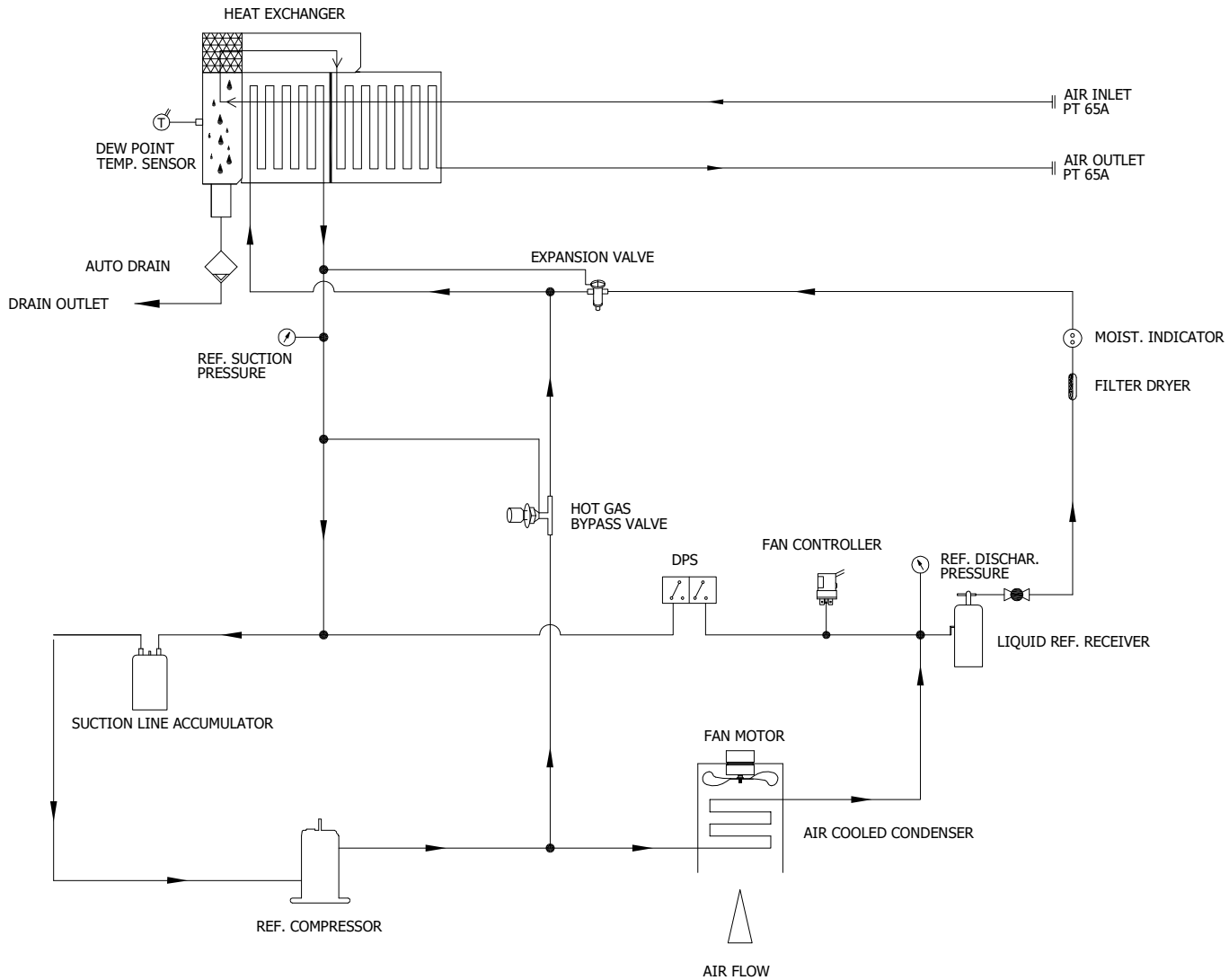
Project Name	-	Model Name	HYD-150N
--------------	---	------------	----------

SPECIFICATION				
1				
2	Supply Voltage	380V	Inlet Flow Rate	21 Nm ³ /min
3	Phase	3PH	Inlet Pressure	7 barg
4	Frequency	60Hz	Inlet Temp.	38 °C
5	Control use	220V	Outlet Flow Rate	21 Nm ³ /min
6	Fulid	Compressed Air	Outlet Pressure	6.8 barg
7	Location	Indoor	Outlet Temp.	28±5 °C
8	Design Code	Maker STD.	Pressure Drop	0.2 bar
9	Area Class	Non-Hazardous	Outlet Dew Point	2~10 °C
10			Design Pressure	9.7 barg
11			Design Temperature	70 °C
12			Ambient Temperature	32 °C
CONSTRUCTION				
14	Refrigerant	R-22	Dimension (W x L x H)	565 X 1005 X 1330 mm
15	Ref. Compressor Type	Scroll	Weight	172 kg
16	Ref. Compressor Capacity	3 HP	Power Consumption	2.9 kW
17	Condenser Type	Air Cooled	Inlet Connection	65A PT Female Screw
18	Condenser Fan Motor	0.4 kW	Outlet Connection	65A PT Female Screw
19		1 EA	Drain Connection	15A PT Female Screw
20	Condenser Fan Size	550 mm	Color (Munsell)	5.7PB 4.1/9.9
21	Condenser Capacity	3 HP		5.7PB 2.9/3.5
22	Condenser Material	Aluminum & Copper		
23	Heat Exchanger Type	Block		
24	Heat Exchanger Material	Aluminum		
25	Ref. Control Device	TEV		
26	Temp. Control Device	Hot Gas Bypass Valve		
27	Drain Trap Type	Electric		
STANDRAD FEATURES AND CONTROL				
29	Fan Control Switch	YES	Ref. Compressor	YES
30	Ref. Liquid Filter Dryer	YES	Expansion Valve	YES
31	Overload Relay	YES	Hot Gas Bypass Valve	YES
32	PCB Controller	YES	Air Cooled Condenser	YES
33	Fan Motor Test Button	YES	Accumulator	YES
34	Air Pressure Gauge	NO	Liquid Ref. Receiver	YES
35	Ref. Pressure Gauge	YES	Oil Separator	NO
36	Dual Pressure Switch	YES	Circuit Breaker	NO
37	Moisture Indicator	YES	Ref. Compressor Heater	YES
38	Drain	YES		
NOTES				
40				
41				
42				
43				
44				
45				
46				

SPECIFICATION	
INLET AIR TEMPERATURE	38°C
AMBIENT TEMPERATURE	32°C
INLET AIR PRESSURE	7 barg
CAPACITY	21.0 Nm ³ /min
IN/OUT CONNECTION	PT 65A
DIMENSION(WDXH,mm)	565 X 1,005 X 1,330
WEIGHT	172 kg
POWER CONSUMPTION	2.86 kW
POWER SUPPLY	380/440V - 3PH - 50/60Hz




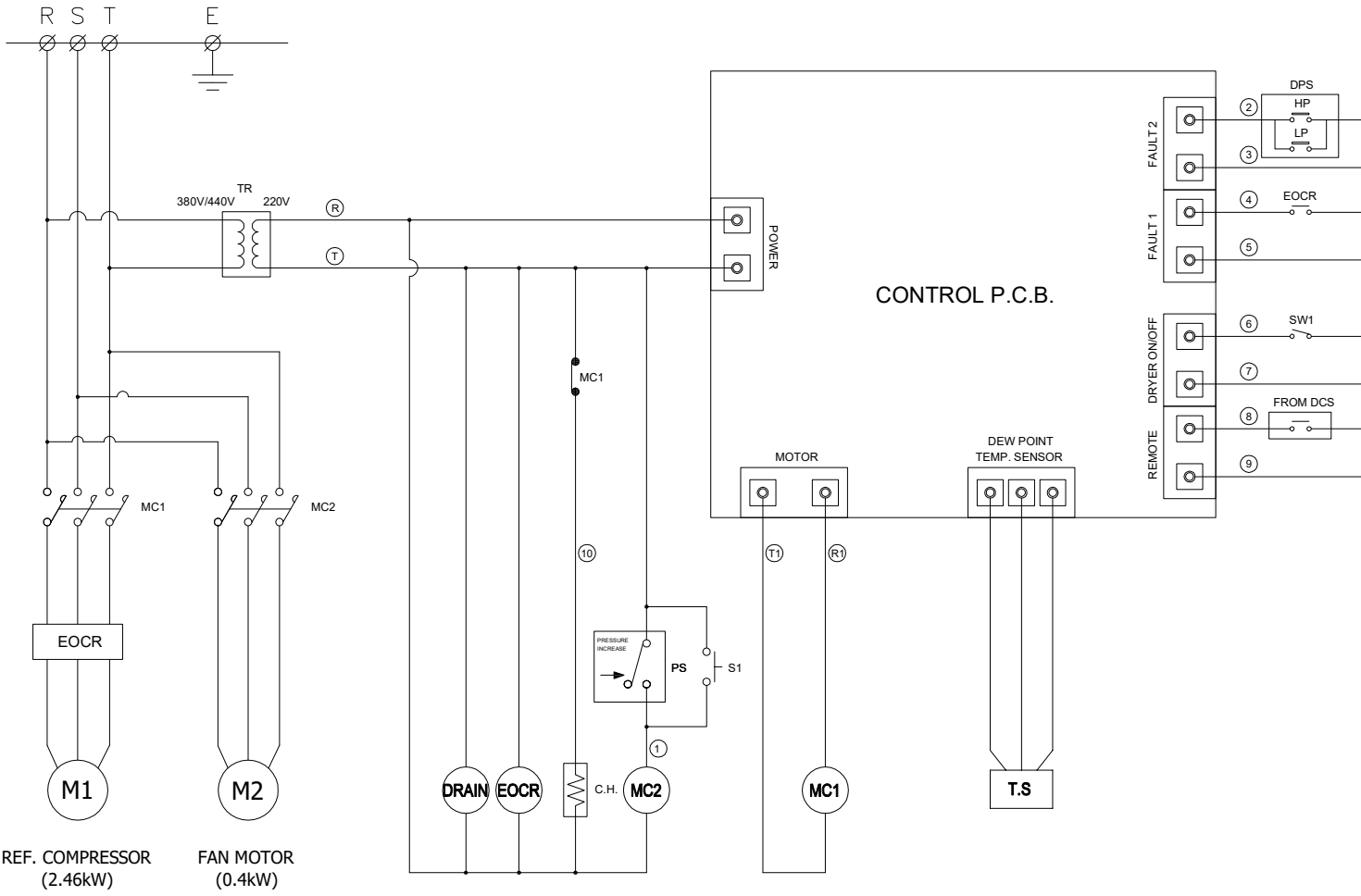
△									
△									
△									
△									
△	2020. 03. 20.	CHANGE OF CONTROL PCB							
△	2018. 11. 26.	ISSUED FOR REFERENCE							
REV. NO.	DATE	DESCRIPTION	DWG.	CHK.	APPD.	APPD.	APPD.	APPD.	APPD.
PROJECT									
MANUFACTURER									
TITLE									
OUTLINE DRAWING									
ITEM NO.	HYD-150N	DWG NO.	GSA-HYD-0150N-01						
SCALE	NONE								REV. △




- ← AIR INLET LINE
- AIR OUTLET LINE
- ← REF. LOW PRESS. LINE
- REF. HIGH PRESS. LINE

DEW POINT		2~10°C @ PDP	
INLET AIR PRESSURE		7.0 BARG	
INLET AIR TEMPERATURE		38°C	
CAPACITY		21.0 Nm ³ /min	
15	PRESS. GAUGE	REF. DISCHARGE	1
14	PRESS. GAUGE	REF. SUCTION	1
13	ACCUMULATOR	-	1
12	AUTO DRAIN	PT 15A	1
11	HEAT EXCHANGER	150 HP	1
10	HGBV	-	1
9	EXPANSION VALVE	3 TON	1
8	MOIST. INDICATOR	3/8"	1
7	FILTER DRYER	3/8"	1
6	REF. RECEIVER	-	1
5	DPS	REF. LOW / HIGH PRESS. SW.	1
4	FAN CONTROLLER	12 ~ 18 BARG	1
3	FAN MOTOR	0.4KW 6P φ550	1
2	A/C CONDENSER	3 HP (CONDENSING CAPACITY)	1
1	REF. COMPRESSOR	3 HP (COOLING CAPACITY)	1
NO.	PART NAME	DESCRIPTION	QTY

△										
△										
△										
△										
△	2020. 09. 16.	PARTS NUMBER DELETE								
△	2018. 11. 26.	ISSUED FOR REFERENCE								
REV. NO.	DATE	DESCRIPTION	ENGR	CHK	APPD	APPD	APPD			
PROJECT										
MANUFACTURER										
										
TITLE										
PIPING & INSTRUMENTATION DRAWING										
ITEM NO.	HYD-150N	DWG NO.	GSA-HYD-0150N-02				REV.	△		
SCALE	NONE									



POWER SOURCE AC 380/440V, 3Ph, 50/60Hz		
12	SW1	SYSTEM ON/OFF SWITCH
11	C.H.	COMPRESSOR HEATER
10	DRAIN	AUTO DRAIN VALVE
9	S1	FAN MOTOR TEST BUTTON
8	DPS	DUAL PRESSURE SWITCH
7	T.S	DEW POINT TEMP. SENSOR
6	TR	TRANSFORMER(OPTION)
5	MC1, 2	MAGNETIC CONTACTOR
4	PS	FAN CONTROLLER
3	EOCR	OVERLOAD RELAY
2	M2	FAN MOTOR
1	M1	REF. COMPRESSOR
NO.	SYMBOL	DESCRIPTION

△										
△										
△										
△										
△										
△	2018. 11. 26.	ISSUED FOR REFERENCE								
REV. NO.	DATE	DESCRIPTION	DWG	CHK	APPD	APPD	APPD	APPD	APPD	
PROJECT										
MANUFACTURER										
 GSA <small>Global Service Air & Gas</small>										
TITLE										
WIRING DRAWING										
ITEM NO.	HYD-150N	DWG NO.	GSA-HYD-0150N-03				REV.	△		
SCALE	NONE									