



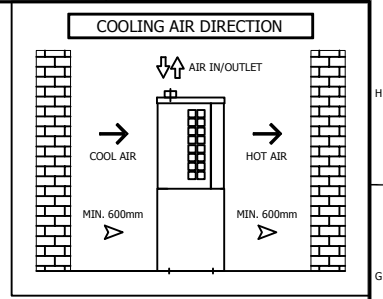
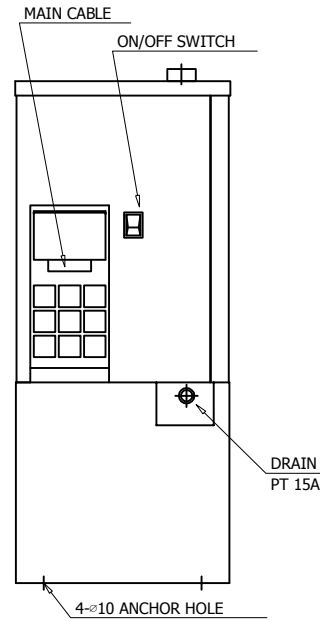
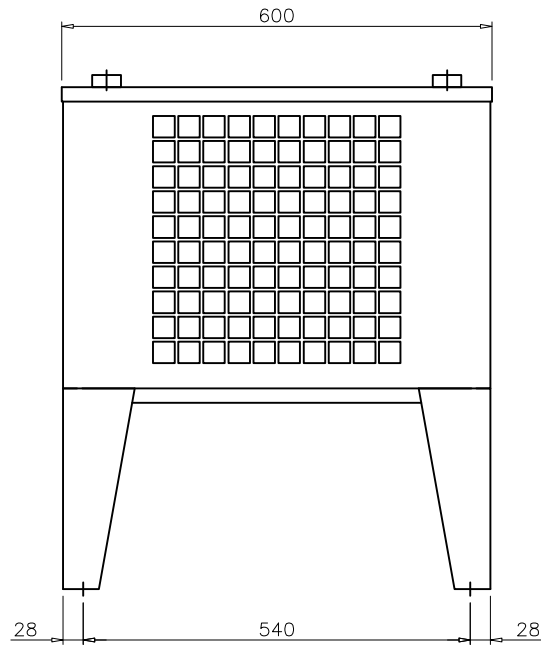
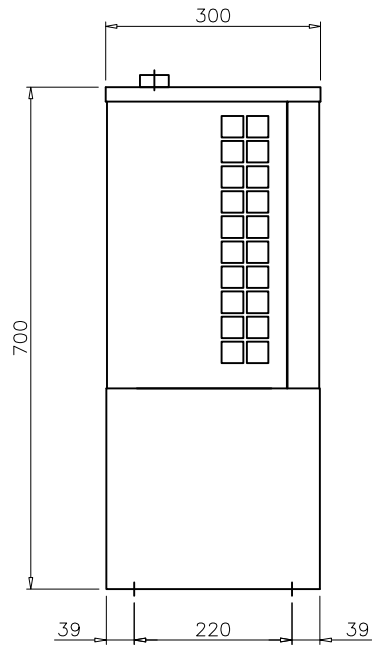
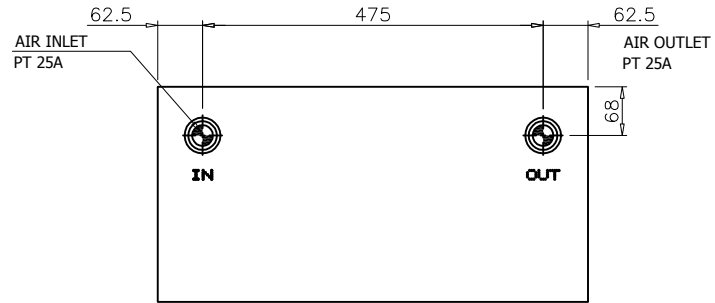
After Cooler

Air Cooled Type

Rev.	Date	Prepared By	Checked By	Approved By
A	2019.01.15	LEE.S.M.	JO.S.J.	KIM.H.W.
B				
C				
D				

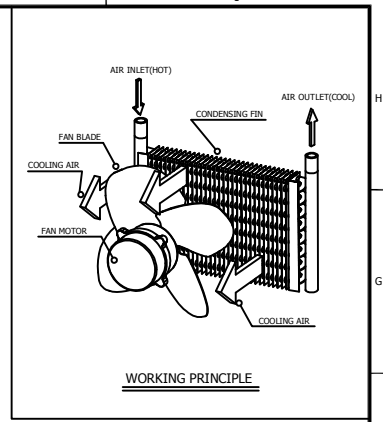
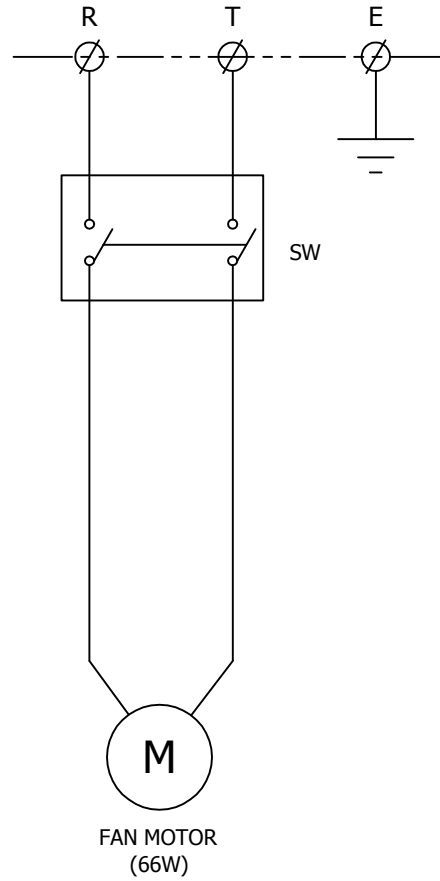
Project name	-	Model Name	HYA-40AN
--------------	---	------------	----------

1	SPECIFICATION			
2	Supply Voltage	220V	Inlet Flow Rate	5.1 Nm3/min
3	Phase	1PH	Inlet Pressure	7 barg
4	Frequency	60Hz	Inlet Temp.	60 °C
5	Control use	220V	Outlet Flow Rate	5.1 Nm3/min
6	Fulid	Compressed Air	Outlet Pressure	6.8 barg
7	Location	Indoor	Outlet Temp.	Over 8 (than ambi. Temp.) °C
8	Design Code	Maker STD.	Pressure Drop	0.2 bar
9	Area Class	Non-Hazardous	Design Pressure	9.7 barg
10			Design Temperature	80 °C
11			Ambient Temperature	32 °C
12	CONSTRUCTION			
13	Inlet Connection	25A PT Female Screw	Dimension (W x L x H)	600 X 300 X 700 mm
14	Outlet Connection	25A PT Female Screw	Weight	23 kg
15	Drain Connection	15A PT Female Screw	Power Consumption	0.066 kW
16	Color (Munsell)	5.7PB 2.9/3.5		
17				
18	FAN & MOTOR SPECIFICATION			
19	Fan Diameter	Ø300 mm		
20	Motor Output(Input) Power	27(66) W		
21	Motor Rated Current	0.3 A		
22	Motor Quantity	1 EA		
23	Motor Pole	4 Pole		
25	STANDRAD FEATURES AND CONTROL			
26	Fan Motor Overload Relay	NO		
27	Pressure Gauge	NO		
28	Magnetic Contactors	NO		
29	Auto Drain	NO		
30				
31				
32	NOTES			
33				
34				
35				
36				
37				
38				
39				
40				
41				
42				
43				
44				
45				
46				



SPECIFICATION	
INLET TEMPERATURE	60°C (MAX. 80°C)
AMBIENT TEMPERATURE	32°C (MAX. 40°C)
WORKING PRESSURE	7 barg
OUTLET TEMPERATURE	OVER 8°C (THAN AMB. TEMP.)
CAPACITY	5.1 Nm ³ /min
IN/OUT CONNECTION	PT 1"
DIMENSION(WXDXH, mm)	600X300X700
WEIGHT	23 kg
MOTOR SPECIFICATION	66W , 50/60Hz
FAN DIAMETER	ø300
POWER CONSUMPTION	66W

△											
△											
△											
△											
△											
△	2018.12.10	ISSUED FOR PROPOSAL									
REV.	DATE	DESCRIPTION	DWG	CHK	APPD	APPD	APPD				
PROJECT											
MANUFACTURER											
TITLE											
HYA-040AN OUTLINE											
ITEM NO.	HYA-040AN	DWG NO.									REV.
SCALE	NONE	GSA-HYA-040AN-01								△	



WORKING PRINCIPLE

POWER SOURCE
AC 220V, 1Ph, 60Hz

NO.	SYMBOL	DESCRIPTION
2	SW	START/STOP SWITCH
1	M	FAN MOTOR

△										
△										
△										
△										
△	2018.12.10	ISSUED FOR PROPOSAL	-	-	-	-	-	-	-	
REV. NO.	DATE	DESCRIPTION	DWG	CHK	APPD	APPD	APPD	APPD	APPD	
PROJECT										
MANUFACTURER										
TITLE										
HYA-040AN WIRING										
ITEM NO.	HYA-040AN	DWG NO.								REV.
SCALE	NONE	GSA-HYA-040AN-02							△	